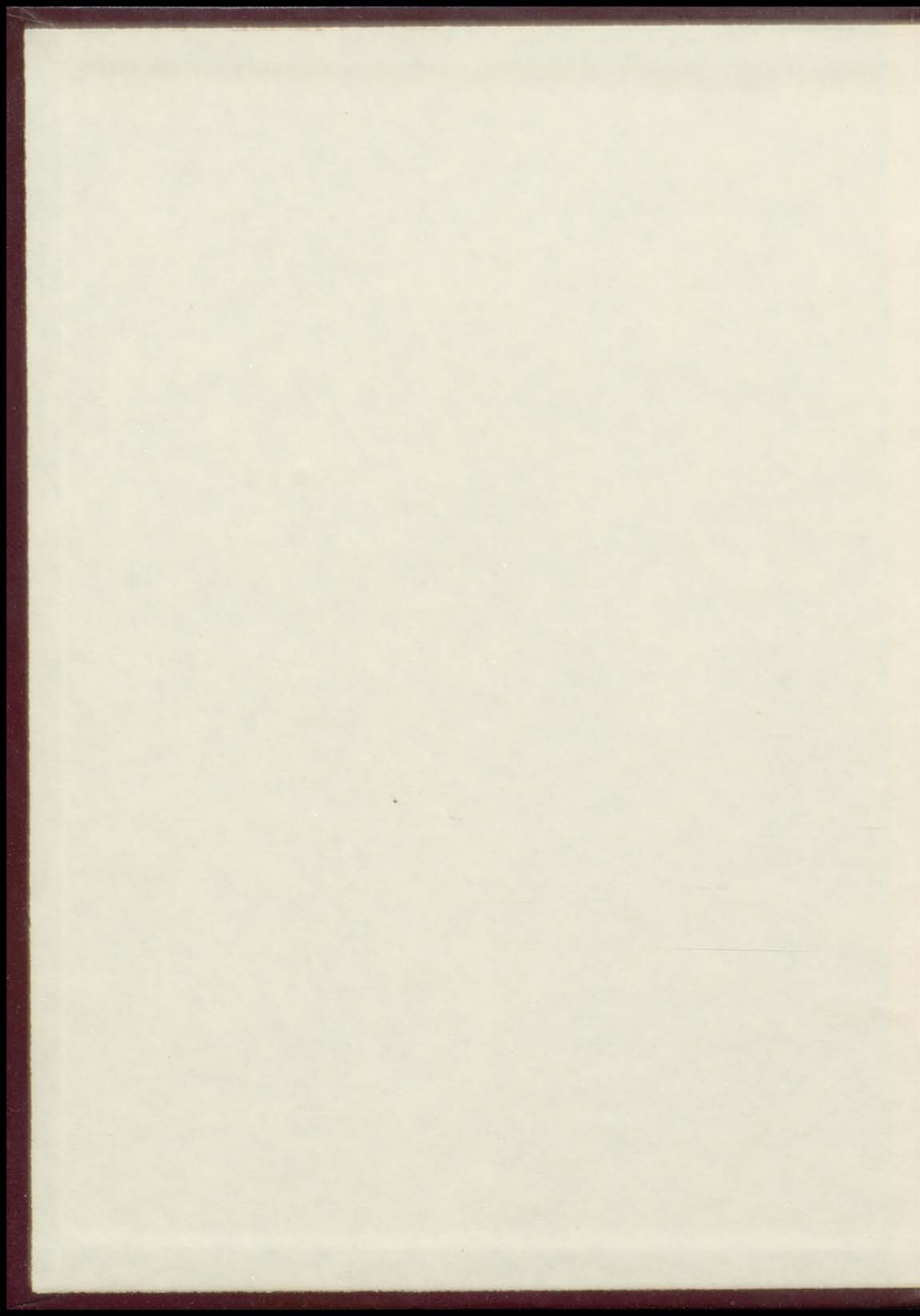


Seventy Four

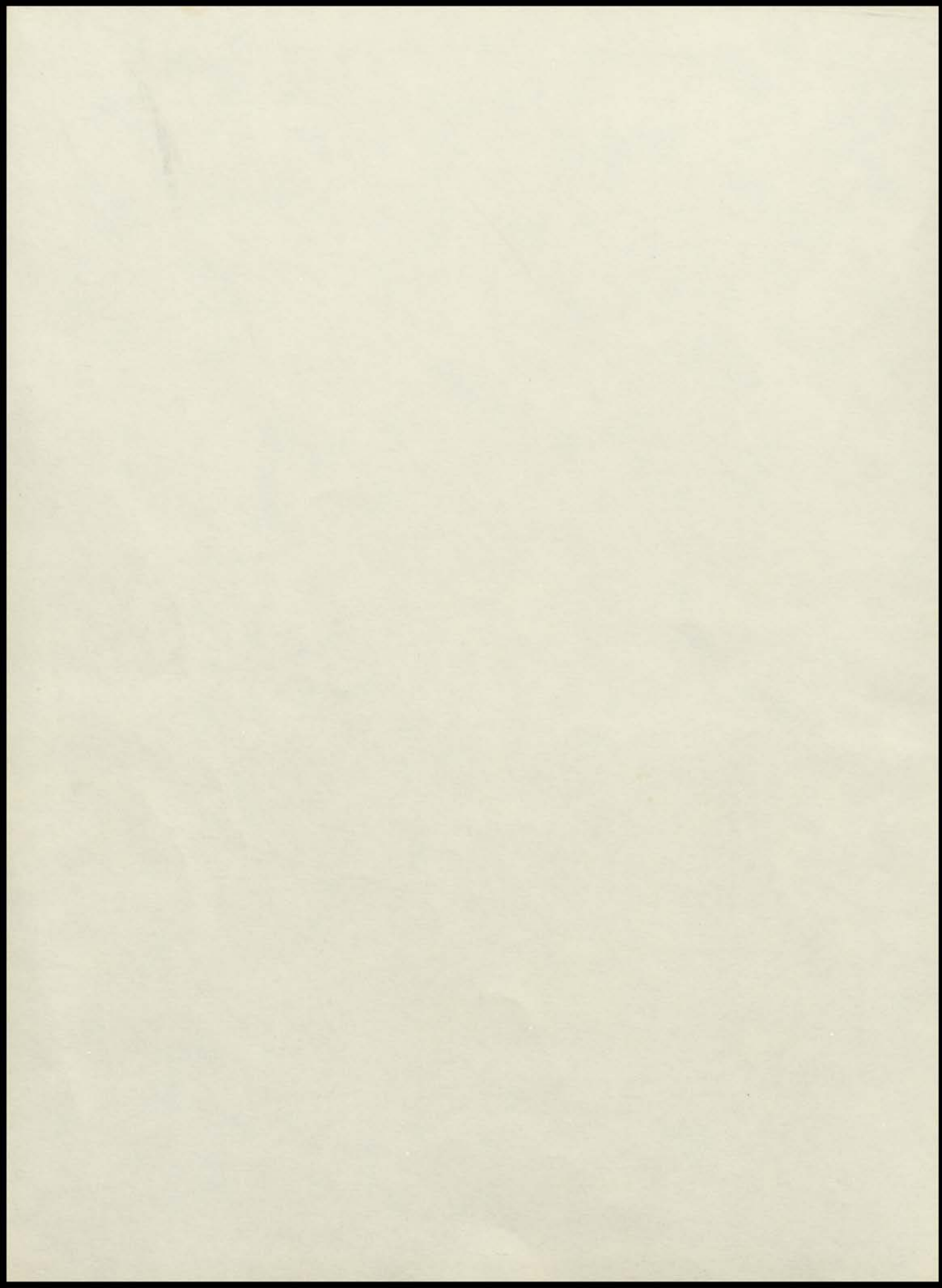


LIONS DEN



THE LIONS DEN 1974

Published by the
Lions Club of [illegible]
[illegible]





THE LIONS DEN 1974

New Boston High School
New Boston, Texas



As you look through this annual, we hope the pictures will bring back fond memories of your days in New Boston High School - memories you will cherish in the years to come - memories of faces and events that have been stamped on the pages of your mind.



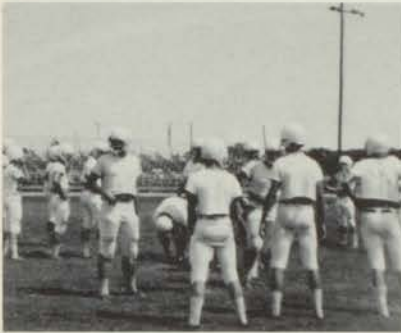


TABLE OF CONTENTS



ADMINISTRATION	5
FACULTY	10
CLASSES	16
SENIORS	17
JUNIORS	33
SOPHOMORES	37
ACTIVITIES	43
ATHLETICS	57
FAVORITES	81
ORGANIZATIONS	87
JR. HIGH	109
FRESHMEN	112
ELEMENTARY	135
ADS	165



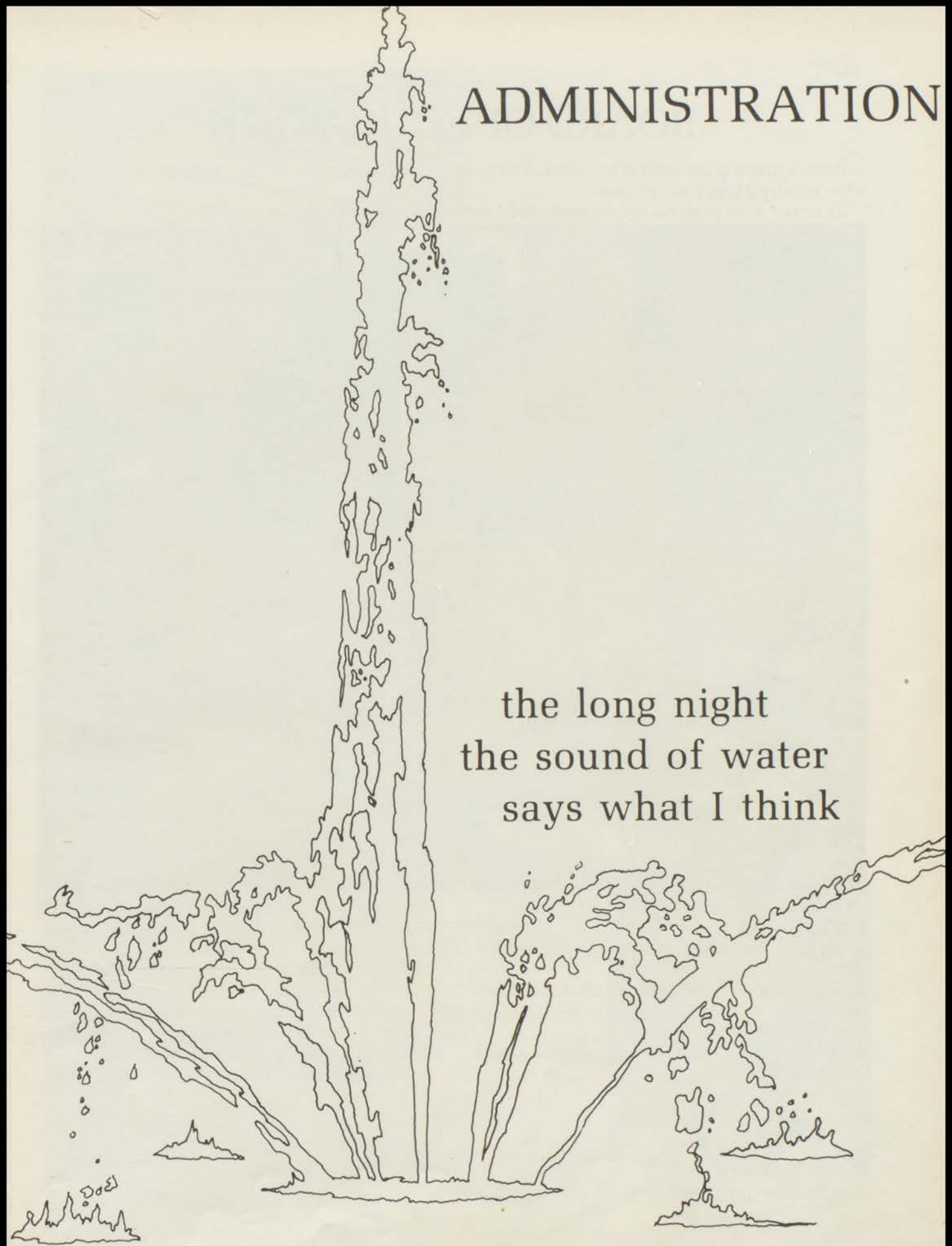
DEDICATION



Mr. McCord has served our schools well during his years as Superintendent; and we, the students, sincerely appreciate the years of his dedicated services. We hope these years have been as rewarding to him as they have been to us. Thus, We dedicate this 1974 LION'S DEN to Mr. Weldon McCord.

ADMINISTRATION

the long night
the sound of water
says what I think



BOARD OF EDUCATION

This is a tribute to our Board of Education. This board is composed of seven men who dedicate their time and effort in helping our schools progress.

We extend to the board our deepest gratitude for their interest in our youth of today.



WELDON MCCORD - Superintendent of Schools

JAMES T. WHEELER - President, One of 7 directors at Red River Army Depot, also Director of Data Systems

E. A. PETERSON - Vice President, Chief of Maintenance Branch Ammunition Division at Red River Army Depot.

ARNOLD BARFIELD - Gulf Distributor and Part Owner of Barfield's Furniture

TIP JONES - Chief of Receipt and Issue in Vehicle and Artillery Branch of General Supply Division, Red River Army Depot.

CLIFFORD BARRETT - Ammunition Inspector Lone Star Army Ammunition Plant

JAMES BARFIELD - Partner of Accounting Firm, Trammell, Barfield, and Trout.

ROBERT EUBANK - Secretary, Chief of Storage Branch Ammunition Division, Red River Army Depot.



MR.
WELDON
McCORD
SUPERIN-
TENDENT



MRS. DORIS BROWN
Secretary



MRS. OPAL WALKER
Tax Collector







FACULTY

in the midst of the plain
sings the lark
free of all things



MR. HUBERT SIMPSON

Principal of
New Boston
High School



Now let's see, what college?



One, Two, Watch Me, Now



Mrs. Mary Wortham
Secretary



Mr. J. P. Vinson
Counselor



Mr. John Bius
Band Director



Seniors don't work all the time . . . do they?



Miss Elliott, I do believe your class is cutting up.



MISS JOYCE ELLIOTT
English III - Speech



Cindy and Lillian doing the daily job of getting the papers out.



MRS. NAN LONGINO
Librarian



MRS. VELMA VINSON
English IV - Shorthand



MRS. LINDA KING
English III - Spanish



The books always have to be checked in the library.



MISS DONNA JACKSON
English II



MR. LARRY DAMRON
Athletic Director



Mrs. Cagle's American History Class.



Football boys always
work hard.



MR. JAMES WESTFALL
Civics - Basketball



MRS. JUANELLE CAGLE
American History



Coach Damron was
enthusiastic at pep
rallies.



Mrs. Phillips has a busy Algebra II class.



MR. DAN THOMPSON
Math - Physics



MRS. AMY PHILLIPS
Math



MRS. MARY JO LEWIS
Homemaking



MR. EARL LEWIS
Agriculture



Lines, Lines, that's all I see



Right this way, please



MR. SAM DICKENS
Vocational



MR. NEAL McMURRY
Mech. Drawing - Shop



Now let's see



Where is that penny mistake?



MRS. HAZEL SHADDIX
Typing - Bookkeeping



And Away We Sew.



MR. OTIS FOX
Counselor



MRS. SUE FLOURNOY
CVAE Homemaking



MR. JAMES WARD
D.E.



MR. ROY CAGLE
I.C.T.

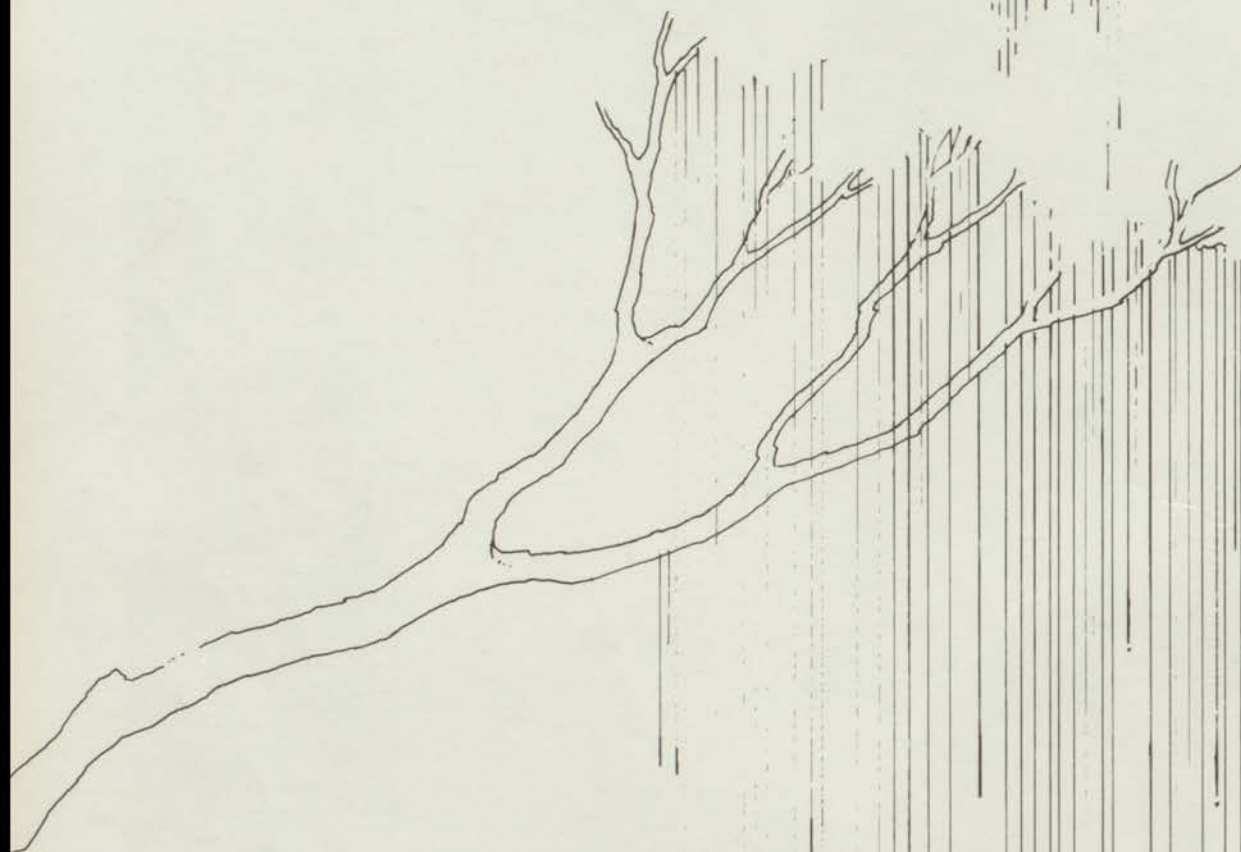


MR. JOHN DEMPSEY
Science




Finding what under a
microscope.

who is it that is awake
the lamp still burning?
cold rain at midnight



CLASSES

SENIORS



silent flowers
peak also
to that obedient ear within



SENIOR CLASS OFFICERS

PRESIDENT:
Randy Shelton

VICE-PRESIDENT:
Mark Crawford

SECRETARY:
Andrea Lambert

TREASURER:
Woody Priest

HISTORIAN:
Carla Kingston

REPORTER:
Brenda Campbell

1974 SENIOR CLASS HISTORY

"We'll be great forever more, Senior class of '74" Our class made many contributions in many areas:

- Football team went 4-6.
- Basketball won District, Bi-District, and played in Regional competition.
- Carl Reeves won All-Area football, nominated to the Prep All American Football Program, and honorable mention in basketball.
- Mike Thompson won All-District football and was named to the Who's Who in High School Athletics.
- Barney Cannon won All-District in football.
- Don Collum, Johnny Ponder, Robert England, Mike Thompson and Carl Reeves got honorable mention in football.
- Seniors went to Rock-a-Way Beach, Missouri.
- Largest class to graduate from NBHS.
- Changed the name of the annual to "Lion's Den."
- First year journalism class.
- One of our Senior classmates, Choice Wooten, became critically ill and was placed in Baylor Medical Center in Dallas.
- Anne Oglesby was State president of TALA and Margie McVay was her corresponding secretary.
- Elnoria Copeland was area winner in DECA.
- Becky Tidwell won Betty Crocker Award.
- Bruce Powers made Regional Band.
- Kenneth Jones received his admittance to West Point Academy.
- Andrea Lambert placed 1st in district Slide Rule Contest along with Debbie Heinrichs winning 2nd place.
- Another classmate, Judy Allen, came back to NBHS from Brazil, S.A., to graduate with her fellow classmates.
- 1st year for Student Council to sponsor a 50's Day.
- First year NBHS Cheerleaders won both 5 blue ribbons and the Spirit Stick at ETSU Cheerleading Camp.
- The Senior Play was "Love Is Too Much Trouble."



Rickey Lee Adams



Judy Kay Allen



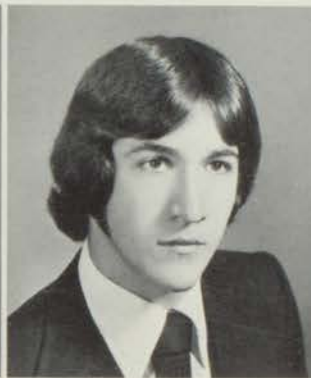
Mark David Allen



Febbie Jane Alley



Carla Bailey Arnold



Rickey Hugh Atchley



Brenda Renee Barfield



Lonnie Anthony Brantley



Harrison Burns, Jr.



Ramona Jan Caldwell



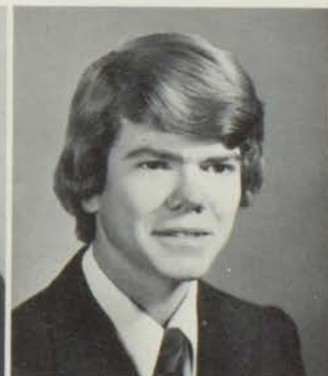
James Lloyd Cameron



Brenda Sue Campbell



Floyd Keith Cannon



James Steve Case, Jr.



Anthony Lynn Chadwick



John Micheal Chandler



Don Robin Collom



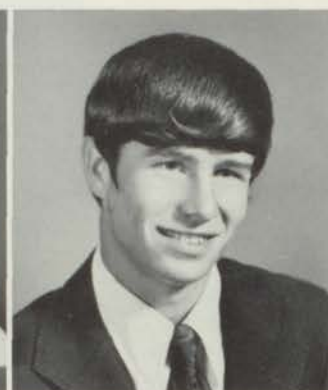
Elnoria Jean Copeland



Melba Darlene Cornelius



Elsie Elizabeth Cowley



Mark Glen Crawford



Artis Culberson, Jr.



Dracinda Kay Davis



George Clifford DeMars,
Jr.



Esther Maria Ellis



Juanita Helen Ellis



Robert Dale England



Glenn Patrick Goodnight



Roger Dale Gray



Cheryl Alwyn Green



Jetty Sue Hall



Joe Lee Haywood



Debra Ann Heinrichs



Nancy Nell Henderson



David Marcus Higgs



Terresa Lynn Hillis



Tommie Sue Hodge



Utissue Hooks



Kathy Denise Hopkins



Tony Louis House



Kenneth Lee Jones



Patricia Eileen Kegley



Rebecca Gaye Kennington

Carla Ruth Kingston

Carlos Bruce Kingston

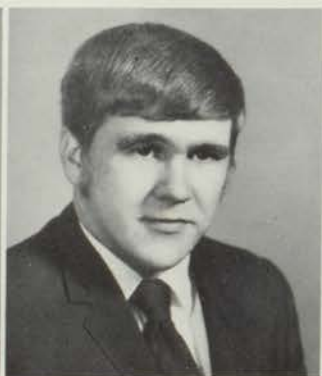
Andrea Elizabeth Lambert



Leonna Darlene Lambert

Shelia Cooney Lattier

Gay Lene Lewis



Cheryl Ann Lindsey

Timothy Dan Little

William James Lutes

Roger Dale Lynch



Rickey Joe McClaran

Margie Ann McVay

Sheila Kay Manor



Phyllis Ann Martin



William Keith Meador



Gwendolyn Joyce Moss



Frances Anne Oglesby



Vickie Ann Owen



Peggy Joyce Patterson



Diane Perkins



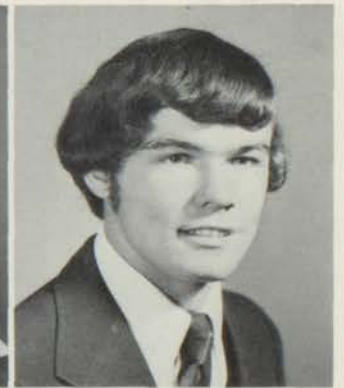
Cynthia Barrett Peterson



Neal Stephen Phillips



Teresa Smith Pool



Johnny Richard Ponder



Mary Charlene Potts



Thomas Bruce Power



James Woodrow Priest Jr.



Ronald Keith Prince



Belinda Lanelle Puckett



Carl Nathan Reeves



Margaret Robbins



Connie Louise Robertson



Leslie Dee Rodden



Connie Lynn Rolf



Bobby Lee Rowden



Ronald Gene Rudd



Dan Sanders, III



Ronnie Lynn Sanford



Randall Mark Shelton



Daniel Archie Shockley



Charles Barnett Simmons
Jr.



Leslie Wayne Smallwood



Janis Adcock Smith



Bruce Ray Stinson



James Monroe Strong



Vicki Wilkerson Taylor



Michael Steven Thompson



Janie Rebecca Tidwell



Melinda Janiece Tower



Karen Kay Vanderburg



Joseph Pete Vigil



Kenneth Ray Washington



Patricia Lanette Weatherford



Marva Lynn Wheeler



Christy Ann White



Lillian Ruth Wood



Vivian Rose Wood



Michael George Woodrow



Choice Glenn Wooten



Thurman Burnett



James Harmon

MID-TERM GRADUATES



COMMENCEMENT

LION STADIUM

May 31, 1974 - 8:00 P.M.

Processional

High School Band

NATIONAL ANTHEM

THEME

Challenge to Youth

Invocation.....Keith Cannon
Song - "Sing Along".....Graduates
"We are the Future".....Randall Shelton
President, Senior Class 1974
"The Future - A New Look".....Anne Oglesby
Presentation of Gift.....Febbie Alley and
Brenda Campbell
Remarks to Graduates.....Mr. Weldon McCord
Presentation of Diplomas.....Mr. James T. Wheeler
Presentation of Awards.....Mr. Hubert Simpson
Song - "Farewell".....Graduates
Benediction.....Debra Heinrichs
Recessional.....High School Band



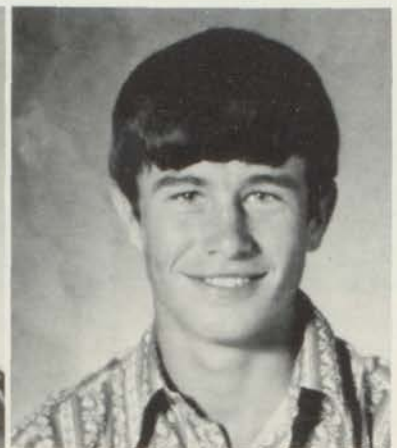
Students Who Have Received Special



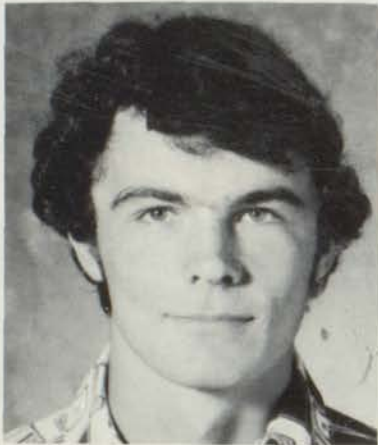
VALEDICTORIAN
LYNN WHEELER



SALUTATORIAN
HILDRETH PIRKEY ENGLISH AWARD
ANDREA LAMBERT



BALFOUR AWARD
MARK CRAWFORD



ALL-ROUND BOY
JOHNNY PONDER



ALL-ROUND GIRL
CARLA KINGSTON



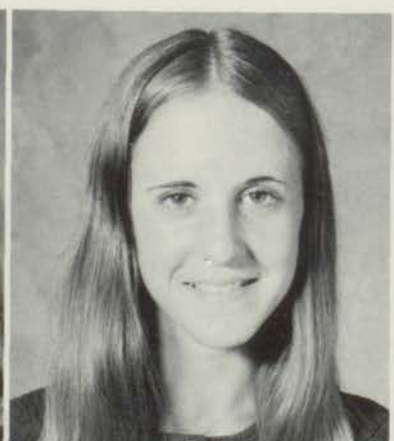
CITIZENSHIP AWARD
GAY LENE LEWIS



ACTIVITIES AWARD
DANFORTH AWARD
RANDY SHELTON



DANFORTH AWARD
STATE TALA PRESIDENT
ANNE OGLESBY



B & PW AWARD
KATHY DENISE HOPKINS

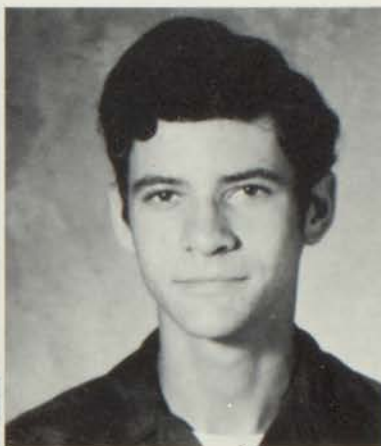
Recognition In New Boston High School



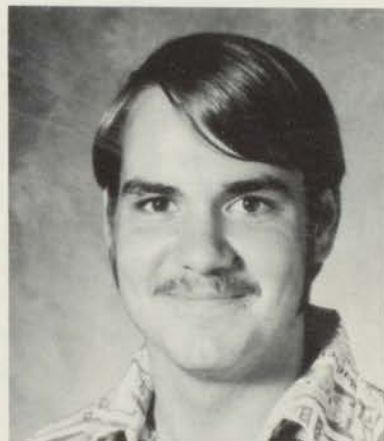
BETTY CROCKER AWARD
REBECCA TIDWELL



OUTSTANDING
HOMEMAKING STUDENT
VIVIAN WOOD



CHAPTER STAR FARMER
CARLOS KINGSTON



OUTSTANDING VICA
STUDENT
BRUCE STINSON



OUTSTANDING DECA
STUDENT
ELNORIA COPELAND



ALL-DISTRICT FOOTBALL
WHO'S WHO IN HIGH
SCHOOL ATHLETICS
MIKE THOMPSON



ALL-DISTRICT FOOTBALL
DISTRICT SHOT PUT
BARNEY CANON



ALL-DIST. GOLF MED.
GLENN GOODNIGHT



ALL-AREA FOOTBALL
CARL REEVES

SENIOR ACCOMPLISHMENTS

- Rickey Lee Adams . . . VICA Club 3, 4; Speech Club 3.
- Judy Kay Allen . . . Band 2, 3, Off. 4; FHA 2, 3, 4; TALA 2, 3, 4; Jr. Class Favorite; Ftbl Queen 4.
- Mark David Allen . . . FFA 2, 3, 4, Off. 3; Ag. Coop 3, 4.
- Febbie Jane Alley . . . Band 2, 3, 4, All-Dist. 2, 3, All-Reg. 3, UIL Solo and Ens. 2, 3, 4; FHA 2, 3; TALA Off. 3, 4; Student Council 2, 4; Roar Staff 3; Speech Club 3; Spanish Club Off. 4; Senior Play.
- Carla Bailey Arnold . . . Pep Squad 2, 4, Off. 4; TALA 2, 3, 4; FHA 2, 3, 4; Journalism Club 4; DECA 4; Roar Staff; Annual Co-Editor.
- Rickey Hugh Atchley . . . DECA 4; VOCA 3.
- Brenda Renee Barfield . . . FHA 2, 3, 4; TALA 2, 3, 4; Pep Squad 2, 3, 4; Speech Club 3; Spanish Club 4; Journalism Club Off. 4; Annual Staff; Roar Staff.
- Lonnice Anthony Brantley . . . Ftbl 2, 3; FFA 2, 4; Basketball 2; Speech Club 3; Track 2, 4.
- Harrison Burns, Jr. . . . FFA 2; VICA 4.
- Ramona Jan Caldwell . . . FHA 2, Off. 3, 4; FFA Sweetheart 3, 4; TALA 3, 4; Pep Squad 2; Speech Club 3.
- James Loyd Cameron . . . Ftbl 2, 3; Track 2; ICT Off 3; Student Council 2; Class Off. 3; Speech Club 3; School Tech 2, 3, 4; Journalism Club 4; Roar Staff; Annual Staff; Elect. 2, 3, 4.
- Brenda Sue Campbell . . . Cheerleader 2, 3, 4; Class Off. 3, 4; Class Favorite 4; Student Council 2, 3; TALA 2, 4; Speech Club 3; FHA 4; Senior Ftbl Princess; Senior Play.
- Floyd Keith Cannon . . . Track 2, 3, 4, Dist. 4, Regional 4; Ftbl 3, 4, All-Dist. 4; Journalism Club 4; Roar Staff; Annual Staff; Senior Play.
- James Steve Case, Jr. . . . Track 2; Basketball 2; Ftbl Mgr. 2; Speech Club 3; DECA 4; Class Favorite 4.
- Anthony Lynn Chadwick . . . Speech Club 3; DECA 3, 4; Spanish Club 4.
- John Michael Chandler . . . Ftbl 2; Annual Staff 3; VICA 4; Texarkana College Scholarship Program.
- Don Robin Collom . . . Ftbl 2, 3, 4; Track 3; Baseball 2, 3, 4; Speech Club 3; Spanish Club Off. 4; FFA 4; Class Favorite.
- Elnoria Jean Copeland . . . FHA 2, 3, 4; Band 2, Solo and Ens. 2, UIL Twirling 2; TALA 2, 4; DECA Off. 3, 4; Area and State Job Interview Contest, Outstanding All-round DECA Student, Dist. and Area Job Interview, Chariman Area DECA Creative Marketing Project, Outstanding Girl Student; Speech Club 3.
- Melba Darlen Cornelius . . . FHA 2; DECA 3, Off. 3, Pres. 4, Outstanding Student; Pep Squad 3, 4; Speech Club 3, 4.
- Elsie Elizabeth Cowley . . . FHA 2, 3, 4; Journalism Club 3; Speech Club 3; VICA 4.
- Mark Glen Crawford . . . Ftbl 2, 3, 4; Baseball 2, 3, 4; Pep Squad Beau; Student Council 2, 3, 4; Sr. Play.
- Artis Culberson, Jr. . . . Basketball 3, 4; FFA 3, 4; VOCA 4.
- Dracinda Kay Davis . . . TALA 2, 3, 4; FHA 3, 4; Band 2, UIL Solo and Ens. 2; Spanish Club 3; Journalism Club 4; Annual Staff; Roar Staff.
- George Clifford DeMars, Jr. . . . Basketball 2, 3; VICA 3, 4; Speech Club 3.
- Esther Marie Ellis . . . Band 2, 3, 4, Solo and Ens. 3, 4, Dist. 4; FHA 2, 3; TALA 3, 4; Speech Club 3; Spanish Club 4; Student Council 4.
- Juanita Helen Ellis . . . FHA 2, 3, 4; Pep Squad 2, 3, 4; Speech Club 3; TALA 3, 4; Spanish Club 4; Journalism Club 4; DECA 4; Annual Staff; Roar Staff.
- Robert Dale England . . . FFA; Ftbl 2, 3, 4; Track 2, 3.
- Glen Patrick Goodnight . . . Transfer from Fall Church, Virginia. Ftbl 4; Basketball 4; Baseball 4; Golf 4, Dist.; Class Favorite; Senior Play.
- Roger Dale Gray . . . Transfer from Texarkana, Texas. Speech Club 3; FFA 4; DECA 4.
- Cheryl Alwyn Green . . . Band 2, 3, 4, Off. 4, Majorette 3, 4, Drum Majorette 4, UIL Twirling Contest 2, 3, 4, UIL Solo and Ens. 2; TALA 2, 3; FHA 3, 4, Off. 3; Spanish Club Off. 3; Miss Peppy.
- Jetty Sue Hall . . . Band 2, 3, 4, Off. 4, Four States Select Band, All-Dist., Texas Tech Music Clinic, UIL Solo and Ens.; Miss Peppy 2, 3; TALA 2, Off. 3, 4; FHA 2, 3, 4; Student Council 2, Off. 3, Vice-Pres. 4; Speech Club 3; Spanish Club 3; Girls' State 3; Class Favorite 4; Roar Staff; Annual Staff; Senior Play.
- Joe Lee Haywood . . . FFA 2, 4; Speech Club 2.
- Debra Ann Heinrichs . . . TALA 2, 3, 4; Student Council Off. 3; Band 2, 3, Solo and Ens. 2, 3, Dist. 2; Spanish Club Pres. 4; FHA 2, 3, 4.
- Nancy Nell Henderson . . . Pep Squad 2; FHA 3, 4; DECA 3, 4; Speech Club 4.
- David Marcus Higgs . . . FFA Off. 3, 4, Dist. Off. 4; Ftbl 2, 3; Senior Play 4.
- Terresa Lynn Hillis . . . FHA 2, 3, 4; Pep Squad 2, 3, 4; TALA 2, 3, 4; VICA Off. 3, 4.
- Tommy Sue Hodge . . . FHA 2, Off. 3, 4; TALA 2, 3, Off. 4; Ftbl Princess 3; Pep Squad 2, Off. 3, 4; Tennis 4; Journalism Club 4; Annual Staff; Roar Staff.
- Utissue Hooks . . . Ftbl 2, 4; Track 3, 4, Dist. Mile Relay 3, 4, Reg. 880 4, All-Dist. Track 4, Most Imp. Trackman 3; FFA 2, 3, 4; Speech Club 3; Senior Play.
- Kathy Denise Hopkins . . . Band 2, 3, 4, UIL Twirling 2, 3, 4, Solo and Ens. 2, 3, 4, Majorette 3, 4, Dist. Band 2, 3, 4; Spanish Club 3; Speech Club 3; Miss Peppy 4; Lone Star Steel Band Clinic 2.
- Tony Louis House . . . Ftbl 3, 4, All-Dist. 4; Track 2, 3, 440 yd. Relay 2, Dist. 220 Yd. Dash, Reg. 100 Yd. Dash, State 220, Reg. 100 Yd. Dash, Reg. 220, Dist. 440 Relay; VOCA 2; VICA 3.
- Kenneth Lee Jones . . . Class Off. 2; Band 2, 3, All-Dist. 2, 3, Solo and Ens. 2, 3, 4, One-Act Play Dist. 3, Best Actor 3, All-Star Cast 4; TALA 2, 3, 4; DECA 4, Off. 4; Outstanding Student Chem. in AA Schools of Amer. Chem. Society East Texas; Nat. Sc. Found. Summer Sch. Training Prog. Asbury College; Class Favorite 4; Outstanding DECA Boy Student 4.
- Patricia Eileen Kegley . . . Cheerleader 2, 3, Head 4; Class Favorite 2; TALA 2, Off. 3, 4; FHA 2, 4; Student Council 3, Off. 4; Class Off. 3; Outstanding American High School Student 3; Speech Club 3; Roar Staff, Special Editor; Annual Staff; Journalism Club; Miss NBHS.
- Rebecca Gaye Kennington . . . Band 2, 3; FHA 3, 4; Speech 4.
- Carla Ruth Kingston . . . FHA 2, 3, 4; TALA 2, 3, 4; Band 2, 3, Off. 4; Dist. 3, 4, Solo and Ens. 4; Class Off. 2, 4; One-Act Play Dist. 3; Student Council Off. 4; Class Favorite 4.
- Carlos Bruce Kingston . . . FFA 2, 3, Pres. 4, Lone Star Farmer Degree; FHA Beau; Ftbl 2, 3; Track 2; Speech Club 3.
- Andrea Elizabeth Lambert . . . TALA 3, 4; Society of Outstanding American High School Students 3; Journalism Club Off. 4; Pep Squad Off. 4; Class Officer 4; Class Favorite 4; Journalism Club 4; Annual Staff; Roar Editor; Senior Play; Slide Rule Dist. 4.
- Leonna Darlene Lambert . . . FHA 2, 3, 4; TALA 3, 4; Pep Squad 2, 3, 4; Spanish Club 4; Journalism Club Off. 4; Annual Staff; Roar Staff.
- Shelia Cooney Lattier . . . TALA 2; Pep Squad 2, 3; FHA 2, 3, 4; Spanish Club 3; Speech Club 3; DECA 4.
- Gay Lene Lewis . . . FHA 2, 3, Off. 3, Pres. 4; TALA 2, 3, 4, Dist. Miss TALA 3; Pep Squad 2, 3, Pres. 4; Speech Club 3; VICA Off. 4; Senior Play.
- Cheryl Ann Lindsey . . . Pep Squad 2, 3; FHA 2, 3, 4; TALA 3, 4; Spanish Club 3; Speech Club 3; DECA 4.
- Timothy Dan Little . . . VICA 3, 4; Speech Club 3; FFA 4, Chapter Farmer.
- William James Lutes . . . DECA 3; FFA 4.
- Roger Dale Lynch . . . FFA 3, 4; Speech 3; VA Coop 4.
- Rickey Joe McClaran . . . FFA 4; Speech Club 3; VICA 3, 4.
- Margie Ann McVay . . . FHA 2, 3, 4; Pep Squad 2, 3, Off. 4; TALA 2, 3, Off. 4, State Off. 4; Spanish Club 3; Speech Club 3; VICA 4; Journalism Club 4; Annual Staff; Roar Staff.
- Shelia Kay Manor . . . FHA 2, 3, 4; Pep Squad 3; Speech Club 3; TALA 3, 4.
- Phyllis Ann Martin . . . DECA 4.

William Keith Meador . . . Baseball 2; Speech Club 3; DECA 3; VICA 4; Spanish Club 4.

Gwendolyn Joyce Moss . . . TALA 2, 3, 4; Pep Squad 2, 3, 4; FHA 2, 3, 4; Spanish Club 3; Speech Club 3; VICA 4, Officer 4; Journalism Club 4; Annual Staff; Roar Staff.

Frances Anne Oglesby . . . FHA 2, 4; Class Off. 2; Pep Squad 2, 3; TALA Club 2, 3, 4, Dist. Off. 2; State V.P. 3, State Pres. 4; Girls' State 3; Speech Club 3; Tennis 2, 3, 4; Spanish Club 4; Journalism Club 4; Roar Staff; Annual Staff; Senior Play.

Vickie Ann Owen . . . Band 2, 3, Pres. 4, All-Dist. 3, Solo and Ens. 3, 4; TALA 2, 3, 4; FHA 2, 3, 4; Spanish Club 5; Speech Club 3; Miss Peppy 3, 4; One-Act Play Dist 3, All-Star Cast 3, Best Actress Dist. 4.

Peggy Joyce Patterson . . . FHA 2, 3; TALA 3, 4; Speech Club 3; Spanish Club 3; Journalism Club 4; Roar Staff, Annual Staff.

Diane Perkins . . . Band 2, 3, 4, All-Dist. 2, 3, UIL Solo and Ens. 2, 4; FHA 2, 3, 4; Spanish Club 3.

Cynthia Barrett Peterson . . . Band 2, 3, Majorette 3, UIL Twirling Contest 2, 3, UIL Solo and Ens. 2, 3, Dist. 3; TALA 2, 3, 4; FHA 2; Speech Club 4; VICA 4; Journalism Club 4; Annual Staff; Roar Staff.

Neal Stephen Phillips . . . VICA 4.

Teresa Smith Pool . . . Pep Squad 2; FHA 2, 3; DECA 3; Speech Club 3; FHA 3.

Johnny Richard Ponder . . . Ftbl 2, 3, 4, Cpat. 4, Hon. Ment. Prep All-American 4; Track 2, 3; Tennis 3, 4; Student Council Rep. 2, 3, Pres. 4; Spanish Club 4; TALA 4; Class Favorite 4.

Mary Charlene Potts . . . TALA 2, 3, 4; Band 2, 3, 4, Lone Star Steel Music Clinic 3; FHA 3, 4.

Thomas Bruce Power . . . Band 2, 3, 4, All-Dist. 2, 3, 4, All-Region 3, 4, Four States Honor Band 2, UIL Solo and Ens. 2, 3, 4; TALA 2, 3; Speech Club 3; Spanish Club 3.

James Woodrow Priest, Jr. . . . Ftbl 2, 3, 4; Basketball 2; Track 3; Baseball 2, 3, 4; Class Off. 3, 4; Class Favorite 3, 4; One-Act Play Dist. 3; Student Council 4; Spanish Club 4.

Ronald Keith Prince . . . FFA 2, 3, 4.

Belinda Lanelle Puckett . . . TALA 2, 3, 4; FHA 2, 3, 4; Pep Squad 2, 3, 4; Speech Club 3; Spanish Club 4; Journalism Club 4; Roar Staff; Annual Staff.

Carl Nathan Reeves . . . Ftbl 2, 3, 4, Capt. 4, All-Northeast Texas 4, 1973 Prep All-American Athletes; Basketball 2, 3, 4, Capt. 4, 1974 Prep All-American; Track 2, 3, 4, Dist. Mile Relay 4; FFA 3, 4; Class Favorite 4.

Margaret Robbins . . . TALA Off. 2, 3, Pres. 4; FHA 2, 3, 4; Pep Squad 2, Cheerleader 3, 4; Journalism Club Off. 4; Roar Staff; Annual Staff; Tennis 4; Class Favorite 4; Senior Play.

Connie Louise Robertson . . . Band 2, 3, 4, All-Dist. 2, 3, 4, UIL Solo and Ens. 2, 3, 4; FHA 2, 3, 4; TALA 2, 3, Off. 4; Speech Club 2; Class Favorite 4; Student Council 4; Senior Play.

Leslie Dee Rodden . . . Spanish Club 3; FFA 3, 4; DECA 4.

Connie Lynn Rolf . . . FHA 2, Off. 3, 4; TALA 4; DECA Off. 4; Journalism Club 4; Class Favorite 4; Annual Staff; Roar Staff.

Bobby Lee Rowden
VOCA 3, VICA 3, 4.

Ronald Gene Rudd . . . Band 2; Speech Club 3; Spanish Club 4.

Dan Sanders III . . . FFA 2, 3, 4; Spanish Club 4.

Ronnie Lynn Sanford . . . VICA 4.

Randall Mark Shelton . . . Ftbl 2, 3, 4, Capt. 4; Basketball 2; Track 2, 3; Tennis 3, 4; Baseball 2, 3, 4; Student Council 2; Class Off. 3, President 4; Class Favorite 4; TALA 4; Speech Club 3; Spanish Club 4; Roar Staff 4.

Daniel Archie Shockley . . . Band 2, 3, 4; Speech Club 3; FFA 4.

Charles Barnett Simmons, Jr. . . . FFA Off. 2; DECA 3, 4.

Leslie Wayne Smallwood . . . FFA 3, 4; Ag. Coop 3; VOCA 3.

Janis Adcock Smith . . . FHA 2; TALA 2; Speech Club 3; DECA 4.

Bruce Ray Stinson . . . VICA 3, Pres. 4; Speech Club 3.

Vicki Wilkerson Taylor . . . TALA 2, 3; Pep Squad 2, 3; DECA 3.

Michael Steven Thompson . . . Ftbl 2, 3, 4, Capt. 4, All-Dist. End 4; Track 2; Basketball 2; Baseball 2, 4; Who's Who in All-American Athletes; Class Favorite 2; Speech Club 3; Class Off. 2, 3; Roar Staff; Senior Play; Mr. NBHS.

Janie Rebecca Tidwell . . . Band 2, 3, 4, UIL Solo and Ens. 2, 3, 4, UIL Twirling Contest 2, 3, 4, All-Dist. 3, Maj. 2, 3, 4; Soph Ftbl Princ.: FHA 2, 3, 4, Betty Crocker Award; Spanish Club Off. 3; St. Council Off. 2, 3, 4; Class Favorite 4.

Melinda Janiece Tower . . . Pep Squad 3, 4; FHA 3.

Karen Kay Vanderburg . . . Pep Squad 2, 3, Cheerleader 4; FHA 2, 3, Off. 4; TALA 2, Off. 3, 4; Spanish Club 3; Speech Club 4; Journalism Club Off. 4; Student Council Off. 4; Annual Staff; Roar Staff; Senior Play.

Joseph Pete Vigil . . . Ftbl Mgr. 2, 3, 4; Basketball Mgr. 2, 3, 4; Track Mgr. 2; Baseball Mgr. 3, 4; Class Off. 2; Spanish Club 4.

Kenneth Ray Washington . . . VICA 4; VOCA 3, 4.

Patricia Lanette Weatherford . . . Pep Squad 2, 3, 4; TALA 2, 3, 4, Dist. Off. 3; FHA 2, 3, 4; Speech Club 3; Spanish Club 4; DECA Off. 4.

Marva Lynn Wheeler . . . Band 2, 3, Off. 4; All-Dist. 2, 3, 4, UIL Solo and Ens. 2, 3, 4; Spanish Club 4; Student Council 4; Senior Play.

Christy Ann White . . . VICA Off. 3, 4; Sweetheart VICA 4; FHA 2, 3, Off. 4; TALA 2, 3, 4; Pep Squad 2, 3, 4; Speech Club 3.

Lillian Ruth Wood . . . Band 2, UIL Solo and Ens. 2; TALA 2, 4; Pep Squad 3, 4; Speech Club 3; DECA Off. 3, 4; Outstanding Saleslady; Journalism Club 4; Annual Staff; Roar Staff.

Vivian Rose Wood . . . Band 2, UIL Solo and Ens. 2; Pep Squad 3, Off. 4; FHA 2, 3, Off. 4; TALA 2, 4; Speech Club 3; Journalism Club 4; Roar Staff; Editor Annual; FHA State Conv. 3, 4.

Michael George Woodrow . . . Speech Club; Spanish Club.

Choice Glenn Wooten . . . Ftbl 2, 4; Basketball 2; Track 2; Speech Club 3; Spanish Club 4.



Mark Febbie Brenda Lonnie Harrison Jan James Brenda Keith



Elnoria Melba Beth Artis George Esther Juanita Cheryl Jetty



Joe Debra Marc



Terri Tommie Utissue Denny



Tony Kenneth Carla

TWELVE
YEARS
TOGETHER



Carlos Leonna Shelia Gay



Cheyrl Timothy Roger



Rickey Margie Keith Vickie



Diane Cindy Johnny Carl Connie Ronald Dan Randy Daniel



Chuck Leslie James Mike Becky Melinda Kenneth Lynn Christy

A minimalist line drawing of a tree with a large circular moon or sun behind it. The tree is composed of several thin, overlapping lines that form its trunk and branches, extending from the bottom left towards the top right. The circular shape is positioned in the upper middle of the page, partially overlapping the tree's branches. The overall style is simple and elegant, using only black outlines on a light background.

JUNIORS

an autumn eve;
there is a joy too
in loneliness

JUNIOR CLASS OFFICERS

- President -
David Rolf
- Vice-President -
Cris Neely
- Secretary -
Particia Mitchell
- Historian -
Shirley Goodwin
- Treasurer -
Freddy Beauchamp
- Reporter -
Marva Perry



Skeet
Amason



Kenny
Barfield



Yolanda
Barfield



Linda
Barnard



Freddy
Beauchamp



Bennie
Bellinger



Jim
Bickle



Donnie
Boswell



LaQuita
Briggs



Serita
Briggs



Angie
Burkhalter



Ethel
Campbell



Sandra
Capps



Debra
Chandler

Looking To The Outer Horizons



Ethel
Campbell



Suzan
Coopwood



Donna
Craven



Kenneth
Crawford



Leslie
Crawford



Jimmy
Crowell



Willie
Crowell



Larry
Daniels



Kathie
Davidson



Rhett
Duffer



Larry
Farlow



Rickey
Fisher



Jerri
Flournoy



Carolyn
Glover



Shirley
Goodwin



Jane Ann
Grider



Charles
Griffin



Marilyn
Griffin



Dorothy
Grissom



Becky
Haarmeyer



Bubba
Haarmeyer



Shelia
Hurdle



Mike
Jarrett



Scooter
Jett



Sherri
Johnson



Joy
Jones



Randy
Jones



Rusty
Jones



Susan
King



Debbie
Kingery



Lisa
Lawrence



Kay
Lunceford



Tommie
McDonald



James
Madewell



Jona
Mahone



Charles
Mayes



Phil
Mills



Patricia
Mitchell



Randy
Moseley



Bill
Murray



Cris
Neely



Dennis
Olivas

And Lo The World Begins To Glow



Diana
Olivas



Gregory
Owen



Linda
Parker



Bill
Pate



Marva
Perry



Lynn
Poindexter



Jeff
Roberson



David
Rolf



Roger
Rood



Billie
Rose



Sherry
Rose



Monte
Rowe



Vickie
Shirley



Charlotte
Singleton



Anita
Smith



Theodis
Talbert



Beverly
Taylor



Donna
Terral



Barry
Thompson



Kelly
Thompson



Patrick
Tofflemire



Lou Ann
Wade



Billy
Wagner



Tony
Walker



Bobby
Wardell



Donna
Williams



Janice
Williams



Phil
Williams



Donald
Wills



Cynthia
Wilson

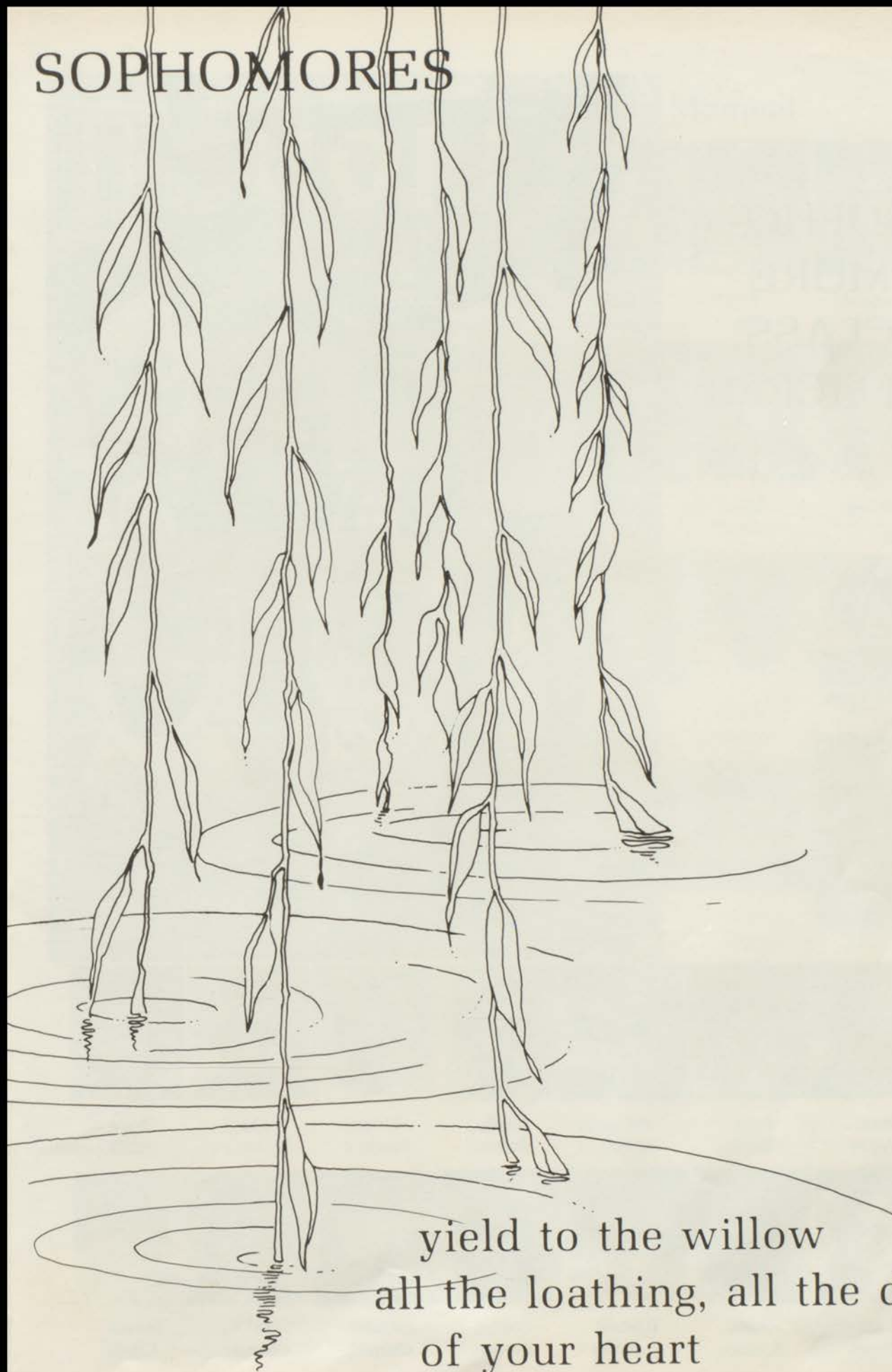


Tommie
York



Mrs. Lynch's Perfect Attendance.

SOPHOMORES



yield to the willow
all the loathing, all the desire
of your heart

SOPHO- MORE CLASS OFFICERS

- President -
Tab Jones
- Vice-President -
Terry Cotton
- Secretary -
Susan Richardson
- Treasurer -
Patricia Tyson
- Historian -
Diane Willis
- Reporter -
Connie Hall



Brad
Akins



John
Baker



Jeff
Barrett



Sherl
Boone



Shirley
Brooks



Michael
Brown



Sherri
Brown



Terri
Brown



Brenda
Burleson



Michael
Burleson



Connie
Carter



Melanie
Chisum



Jean
Choisser

ABSENT

James
Adams

Time Slips Away Moment By Moment



Susan
Clark



Mary
Clark



Debra
Clemens



Karen
Coleman



Freddie
Cornelius



Terry
Cotton



Sandra
Cowley



Mary
Crowell



Joan
Culberson



Glynda
Cunningham



Billy
Davidson



Richard
Day



Kenneth
DeMars



Sandra
Dollar



Ann
Eaves



Pearl
Ellis



Melvin
Fagan



Kim
Farrer



Debra
Fikes



Jackie
Fisher



Linda
Fletcher



Vicki
Forrester



Bettie
Forte



Byron
Gardner



Jimmy
Graham



Dennie
Gray



Jett
Green



Hall



Vera
Hall



Annette
Hammonds



Jim
Harbor



Debra
Harmon



Earnest
Haywood



Craig
Herndon



Karen
Higgs



Rickey
Holt



Johnny
Hooks



Charles
Hopkins



Ray
Jennings



Sammy
Johnson



Ronnie
Jones

Sophomores — A Time For Labor And Thought



Tab
Jones



Susan
King



Paula
Lambert



Linda
Lancaster



Paige
Lancaster



Steve
Langford



Elizabeth
Letcher



Billy
Lewis



Queen
Liggins



Sharon
Lindsey



Lisa
Little



Thomas
Little



Anne
Lynch



Ethel
Mathews



Anna
Mayes



Karen
McAnally



Gay
McClaran



Audrey
McKeehan



Theodore
Mercer



William
Moore



Arthur
Morris



Larry
Noel



Paul
Oglesby



Jay
Olson



Larry
Penny



Sherry
Phillips



Russell
Pierce



Cheryl
Poindexter



Lorine
Rains



Jo Day
Rains



Mike
Raney



Thomas
Raney



Cynthia
Reily



Susan
Richardson



Harvey
Ridgeway



Kathy
Roberts



Matt
Schlatre



Donald
Scott



Debra
Smith



Vickie
Smith



Donna
Stewart

The Winds And Rains Still Come



Michael
Steward



Wayne
Stoker



Glendell
Teddleton



Wendell
Teddleton



Junior
Tefteller



Glen
Thom



Loretta
Tohill



Chet
Turner



Patricia
Tyson



Mary
Wagner



Debra
Walker



Steven
Wardell



Keith
Weatherford



Richard
Webster



David
Whiteman



Roy
Whittle



Beatrice
Williams



Babb
Williams



Timothy
Williams



Debra D.
Willis



Debra J.
Willis



Dianna
Willis



Jerry
Willis



M. C.
Willis



Janette
Yarbough





SENIORS
74



ACTIVITIES

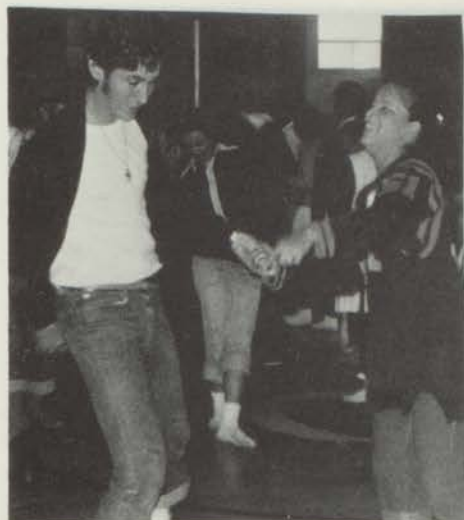


the first dream of the year;
I kept it a secret
and smiled to myself

TEACHERS IN ACTION



FIFTIES DAY



SOPHOMORE SNAPS



Juniors — A Busy Group



What
is
the
excite-
ment?





Leonna reading Christmas story.

Santa busy handing out gifts to little visitors.



Leonna and Johnny finishing up the Christmas story.



DRESS-UP DAY



COLOUR MY



WORLD



WESTERN



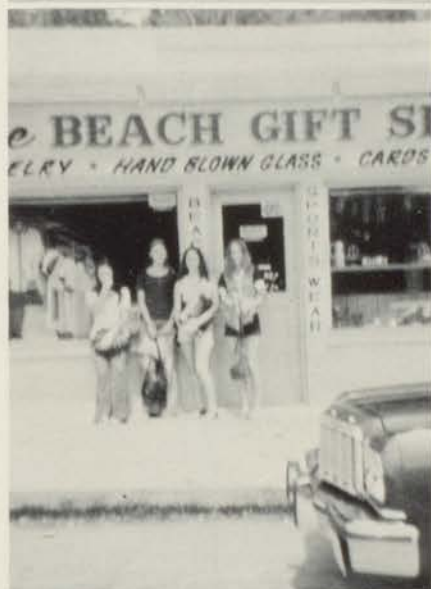
DAY



Seniors Take A Trip To



Rockaway Beach To Relax



LOVE IS TOO MUCH TROUBLE

Toasty-----Brenda Campbell
 Joe Burke -----Mark Crawford
 "Pinky" Hamilton-----Glen Goodnight
 "Oggy" McClosky -----Marc Higgs
 Connie Ashton -----Anne Oglesby
 Ebb Durham -----Margaret Robbins
 Flo Durham -----Patsy Kegley
 Shirley Bradford -----Karen Vanderburg
 Sugar Lou Jackson -----Andrea Lambert
 Monica Bates -----Gay Lewis
 Mrs. Bates -----Jetty Hall
 Miss Emily Ross -----Lynn Wheeler
 Cliff Hayward -----Mike Thompson
 Dr. Pillsy -----Utissue Hooks

Sponsor -----Mrs. Velma Vinson

Student Assistants -----Cindy Peterson
 Johnny Ponder

Stage Manager -----Artis Culberson

Sound Chairman-----James Cameron

Lights-----Lonnie Brantley

Prompter -----Judy Allen
 Tommie Hodge

Curtain -----Randall Shelton

Costumes -----Connie Robertson

Make-Up -----Carla Arnold
 Carla Kingston

Tickets-----Debbie Heinrichs

Typist -----Becky Tidwell

Art and Advertising -----Vivian Wood

Programs -----Cindy Davis
 Connie Rolf

Ushers:

Terri Hillis
 Denny Hopkins
 Brenda Barfield
 Melinda Tower
 Gwenn Moss
 Sheila Manor
 Joe Haywood
 Bruce Stinson
 Kenneth Jones
 Leslie Rodden
 Ronald Rudd

to wake alive
in this world
what happiness!



ATHLETICS

New Boston High School Cheerleaders



HEAD CHEERLEADER - Patsy Kegley. SENIOR CHEERLEADERS - Brenda Campbell, Margaret Robbins, Karen Vanderburg. JUNIOR CHEERLEADERS - Patricia Mitchell, Marva Perry, Kelly Thompson. SOPHOMORE CHEERLEADERS - Susan Richardson, Bea Williams, and Debra Walker.

NBHS PEP SQUAD



IN BUS: Jona Mahone, Shirley Goodwin, Lori Tohill, Debra Willis, Brenda Burleson, Becky Haarmeyer, Pat Weatherford, Christy White, Belinda Puckett. STANDING: Leonna Lambert, Lillian Wood, Vicki Ensey, Suzan Coopwood, Janice Williams, Susan Richardson, Karen Vanderburg, Patricia Mitchell, Kelly Thompson, Bea Williams. SITTING ON BUS: Vivian Wood, Andrea Lambert, Margie McVay, Gay Lene Lewis, Carla Arnold, Tommie Hodge, Margaret Robbins, Patsy Kegley.



PEP SQUAD OFFICERS

President - Gay Lewis
Vice President - Vivian Wood
Secretary - Treas. -
Tommie Hodge
Reporter - Margie McVay
Sgt. Arms - Carla Arnold
Andrea Lambert

FOOTBALL SWEETHEART AND HER COURT



JUDY ALLEN - SENIOR



BRENDA CAMPBELL - SENIOR



KELLY THOMPSON - JUNIOR



SUSAN RICHARDSON - SOPHOMORE

NEW BOSTON LIONS FOOTBALL TEAM



1973-74 Lion Football Schedule and Scores

Lions v. Clarksville	20-8	Lions v. Hooks	15-27
Lions v. Pittsburg	32-6	Lions v. L-K	8-17
Lions v. Rivercrest	6-15	Lions v. Hughes Springs	19-12
Lions v. Hooks	7-22	Lions v. Paul Pewitt	20-35
Lions v. DeKalb	0-7	Lions v. DeKalb	21-18



Head Coach - Larry Damron, Harry Haggard, James Westfall, and Gary Schiffner.



Keith Cannon



Don Collum



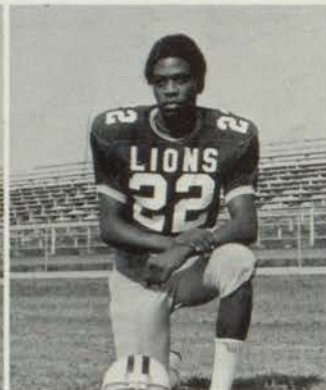
Mark Crawford



Glenn Goodnight



Roger Gray



Utissue Hooks



Johnny Ponder



Woody Priest



Carl Reeves



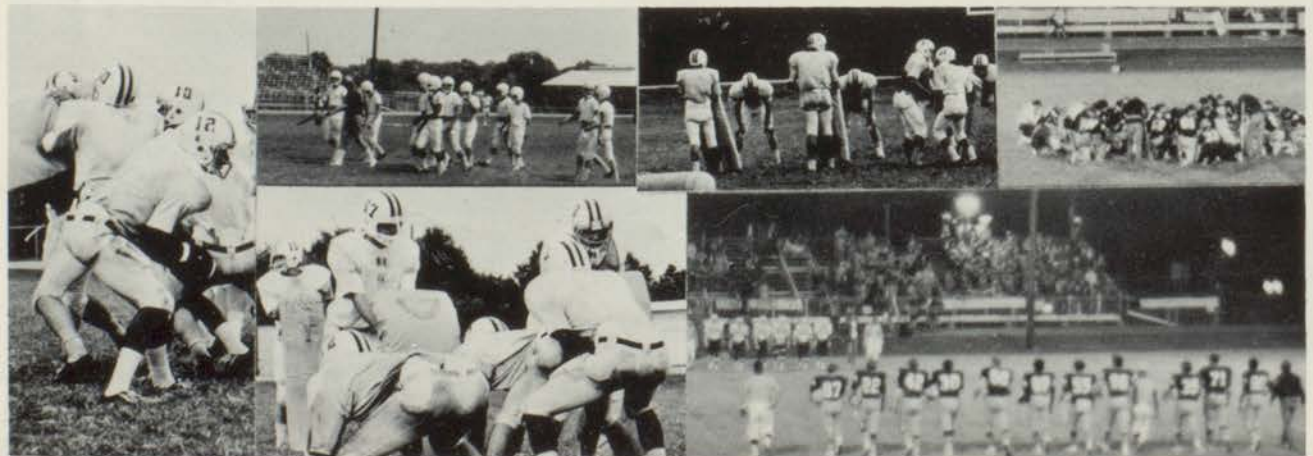
Randy Shelton



Mike Thompson



Choice Wooten



LION VARSITY BASKETBALL TEAM



KNEELING RIGHT TO LEFT: Bryon Gardner, Mgr., Glenn Goodnight, Carl Reeves, Cris Neely, Artis Culber-son, Ricky McClaran, Freddy Beauchamp, Mgr. STANDING: Coach Westfall, Monte Rowe, Bubba Haarmeyer, Ricky Fisher, Tony Walker, Rusty Jones.



Carl Reeves



Artis Culber-son



Ricky McClaran



Glen Goodnight

The fighting Lions really proved themselves as winners in basketball for the 1973-74 school year. They won the first half of the district and defeated Hooks for the district as they were plagued with illnesses. But the Lion spirit rose again and they defeated Rivercrest 81-76 in the Bi-District game. Then on to Denton in the Regional. Kaufman Lions defeated the New Boston Lions to the tune of 67-50. 1973-74 proved to be a great year and 1974-75 promises to be even greater. We salute you Lions and coaches for a wonderful year.

THE NEW BOSTON LIONS JUNIOR VARSITY TEAM



KNEELING: Jim Harbor Mgr., Johnny Hooks, Rickey Webster, Melvin Fagan, Jeff Barrett, Sammy Johnson, Mgr. Coach Schiffner, Harvey Ridgeway, Jay Olson, Donnie Boswell, Bill Pate and Larry Noel.



Look at me when I talk to you!!!



What color is it?



Aw, Ref!!!



Boys, my girdle's k-i-l-l-i-n-g me!!!



The
excited
Lion
Crowd
at
Tiger
Gym
in
Texarkana



Nothing like springs in the
shoes, eh, Rickey???

Lions after the Hornets!



Touchdown!!
Whew!!!



KILL
the
man
with
the
ball!!!



Carl,
why
are
you
so
calm?



Going
my
way??



Good
art
work!!



Vivian and
Cindy,
you know
not to
write on
the bus!



NBHS Cops District — Bi-District Crown



KNEELING: Glenn Goodnight, Tab Jones, Mark Crawford, Woody Priest, Brad Akin, Rickey Webster, Bill Pate, Matt Schlatre. STANDING: Coach Larry Damron, Jeff Roberson, Monte Rowe, Rusty Jones, Cris Neely, Don Collom, Bubba Hearnmeyer, Randy Shelton, Mike Thompson, Kenny Barfield. Manager, Joey Vigil.



The Lions won their first trophy at the Texarkana Baseball Tournament. They won District 16AA baseball by defeating Hooks 2, DeKalb 2, Linden Kildare 1, and Paul Pewitt 1. Our only losses in District play were to Paul Pewitt and Linden Kildare. The Lions finished the regular season with a record of 11 wins and 3 losses. The Lions won Bi-District by defeating Rivercrest the best 2 out of 3 games. They drew Kaufman in the Regional. They were defeated by the Kaufman Lions in the first game, won the second and lost 9-11 the third game.

NBHS Does Itself Proud



In Track Events



Our boys are Hams!



Monte??



Tell them like it is Coach Haggard



Utissue the Thinker



Hurry Tony!



NBHS always comes out on top



Tony on the run



Faster Ronnie



Rusty in action



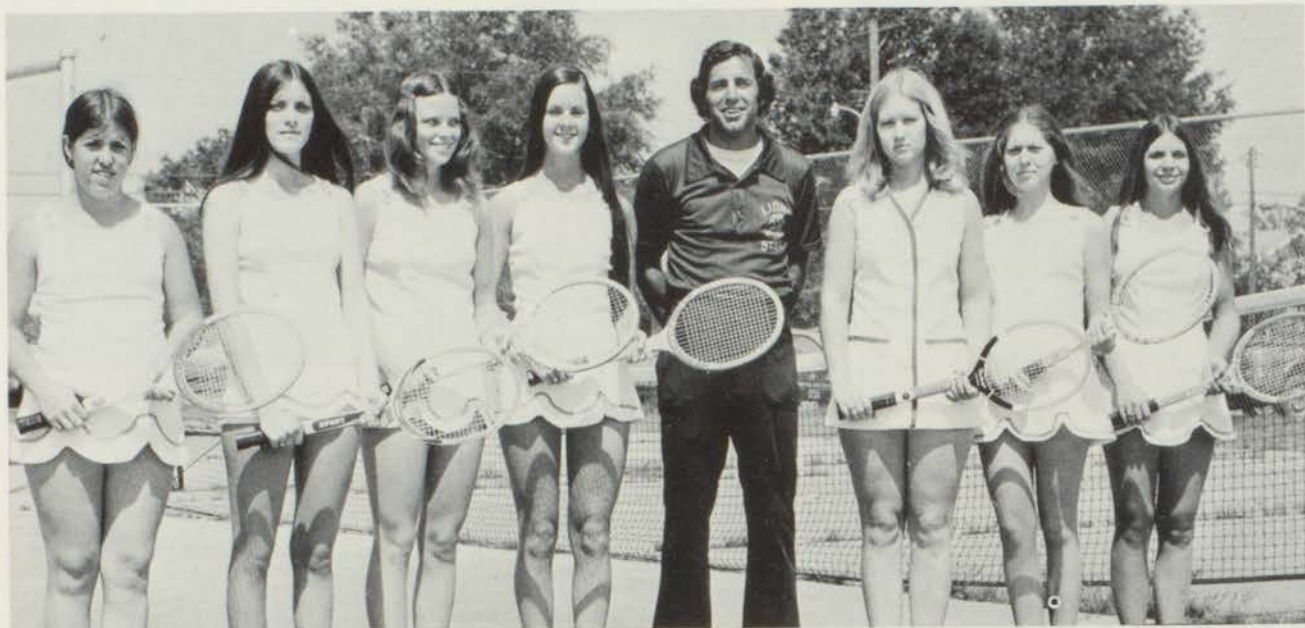
NB Fans



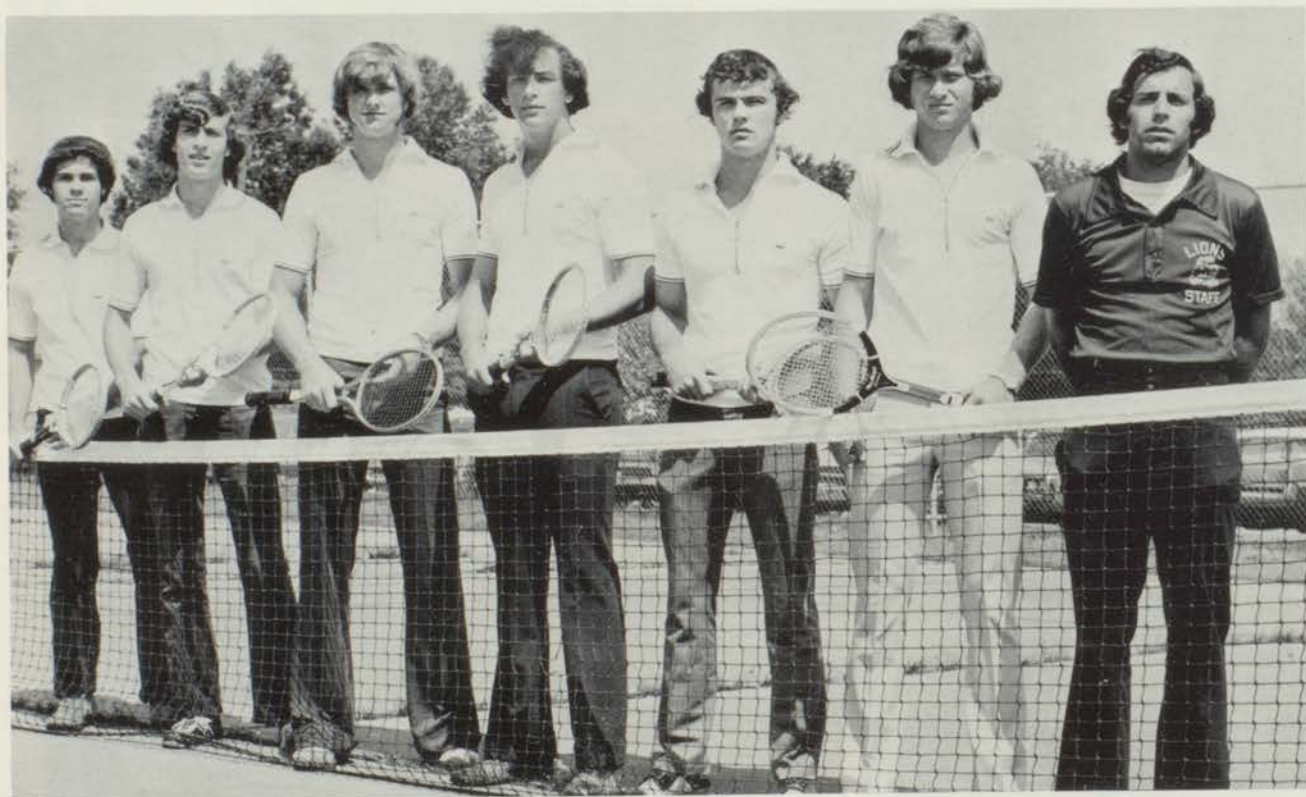
"The Giant"

The Lion track team took the District 16 AA Trophy, as they had an outstanding year. R. Fisher won 1st place in the High Jump and in the Broad Jump; R. Jones took 2nd place in the Broad Jump. B. Cannon was first in the Shot Put, while T. House took 2nd place in the 100 and 220 Yard Dash. U. Hooks won second in the 880 and R. Jennings place 4th. In the 440 Yard Dash, T. Cotton took first place and T. Walker took second place. R. Jones placed 2nd in both 120 High Hurdles and 330 Intermediate Hurdles. In the Regional R. Fisher took 2nd place in the High Jump.

TENNIS TEAM



Lisa Little - Girls doubles, Belinda Puckett - alternate, Tommie Hodge - Girls doubles, Margaret Robbins - Girls doubles, Coach Charles Hensley, Anne Oglesby - Girls singles, Shirley Goodwin - Girls singles, Bea Williams - Girls doubles.



Byron Gardner - Boys doubles, Paul Oglesby - Boys doubles, Mike Thompson - Boys doubles, Randy Shelton - Boys doubles, Johnny Ponder - Boys singles, Don Collum - Boys singles, Coach Charles Hensley.



NBHS GOLF TEAM

STANDING, Left to Right: Larry Daniels, Glenn Goodnight, David Rolf, Jeff Roberson, Randy Jones, Freddy Beauchump. KNEELING: Coach Hensly, Glenn Goodnight won the District medalist at the District 16 AA meet which all the boys attended. They also went on to the Regional meet in Arlington.

NEW BOSTON BAND MAJORETTES



Drum Major - Cheryl Green - Senior



Head Majorette
Becky Tidwell - Senior



Denny Hopkins - Senior



Diana Olivas - Junior



Susan King - Junior



Patricia Tyson - Sophomore



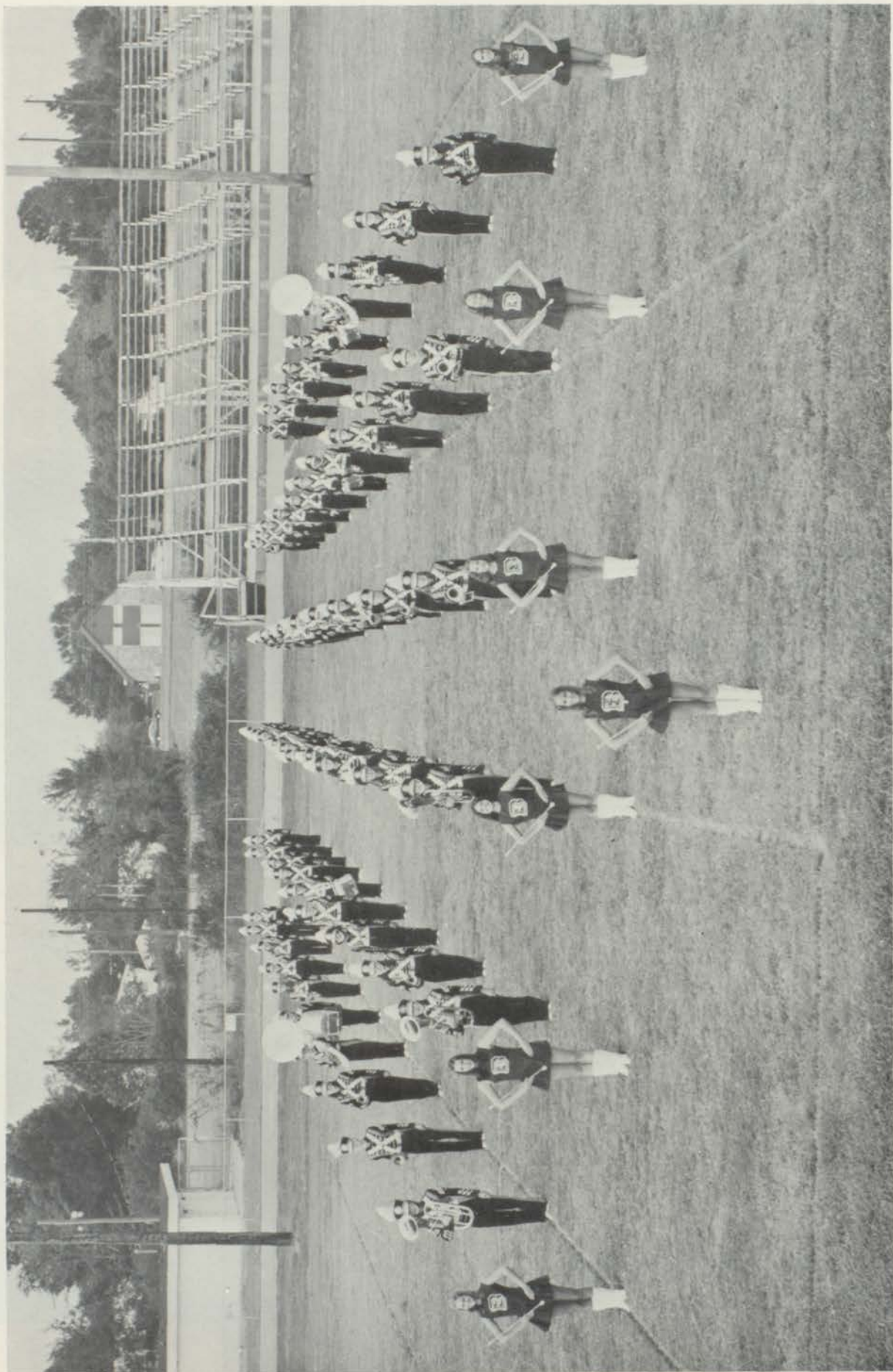
Karen Higgs - Sophomore

NEW BOSTON CONCERT BAND



FIRST ROW: Denny Hopkins, Esther Ellis, Terri Barrett, Debra Clemons, Zona Ellis, Jeannie Burns. SECOND ROW: Bruce Power, Connie Robert-son, Patricia Tyson, Susan King, Cynthia Reiley, Diana Olivas, Anne Lynch, Connie Vanderburg, Carla Kingston, Donna Williams, Becky Tidwell. THIRD ROW: Lynn Peek, Tammy Day, Mary Ann Clark, Jill Raney, Renee Walters, Febbie Alley, Tracy Thomas, Vickie Owen, Sherri Johnson, Vickey Cowley, Cheryl Green, Judy Allen, Charlene Potts, Karen Matthews, Jill Waldrum, Sandy Forrester. FOURTH ROW: Robin Izard, Lynn McElwee, Rhonda Ensey, Willie Gladney, Anna Mayes, Becky Freeman, Sharon Purtle, Donna Terral, Terry Morris, Bill Murray, Lynn Wheeler, Brian Stubbs, Susan Clark, Julie Fox, Karen Higgs, Victor Thompson, James Robertson, Dena Britton, Judy Izard. STANDING: Julie Rood, Brenda Lawrence, Dennis Wilson, Jack Walker, Mark Burns, Susan Simpson, Otis Scott, Mr. Bius, Diane Perkins.

NEW BOSTON MARCHING BAND





BAND OFFICERS: President - Vickie Owen, Vice President - Diane Perkins, Secretary - Febbie Alley, Treasurer - Carla Kingston, Reporter - Lynn Wheeler, Drum Major - Cheryl Green, Asst. Drum Major - Becky Tidwell



MAJORETTES: Seniors: Cheryl Green, Becky Tidwell, Denny Hopkins
Juniors: Susan King, Diana Olivas
Sophomores: Patricia Tyson, Karen Higgs



SENIOR BAND MEMBERS: Denny Hopkins, Carla Kingston, Charlene Potts, Bruce Power, Lynn Wheeler, Connie Robertson, Diane Perkins, Febbie Alley, Becky Tidwell, Vickie Owen, Cheryl Green.



ALL DISTRICT BAND MEMBERS: Judy Iazard, Cynthia Reiley, Denny Hopkins, Patricia Tyson, Karen Higgs, Susan Clark, Carla Kingston. STANDING: Susan Simpson, Connie Robertson, Tracy Thomas, Bruce Power, Lynn Wheeler, James Robertson, Donna Williams, Bill Murray.



FLUTES: Denny Hopkins, Terri Barrett, Debra Clemons, Zona Ellis, Jeannie Burns.



CLARINETS: Bruce Power, Connie Robertson, Patricia Tyson, Susan King, Cynthia Reiley, Diana Olivas, Anne Lynch. STANDING: Connie Vanderburg, Lynn Peek, Jill Raney, Lynn McElwee, Rhonda Ensey, Willie Gladney.



SAXOPHONES: Vickie Owen, Charlene Potts, Renee Walters, Febbie Alley, Tracy Thomas. BASS CLARINETS: Cheryl Green, Vickey Cowley, Sandy Forrester, Jill Waldrum, Karen Matthews, Sherri Johnson.



FRENCH HORNS: Becky Tidwell, Donna Williams, Carla Kingston. CORNETS: Lynn Wheeler, Bill Murray, Terry Morris, Donna Terral, Sharon Purtle, Becky Freeman, Anna Mayes.



TROMBONES: Dena Britton, James Robertson, Judy Izard, Victor Thompson. BARITONES: Karen Higgs, Julie Fox. BASSES: Susan Clark, Brian Stubbs.



CYMBALS: Brenda Lawrence. DRUMS: Susan Simpson, Dennis Wilson. BASS DRUM: Ottis Scott.



BELLS: Mark Burns. XYLOPHONE: Jack Walker. TIMPANI: Diane Perkins, Julie Rood.



Bruce Power
All Regional Band

SEVENTH GRADE BAND



SIXTH GRADE BAND

a world of grief and pain
flowers bloom
even then . . .

FAVORITES



MR. AND MISS NBHS



MIKE THOMPSON

PATSY KEGLEY

MOST BEAUTIFUL and MOST
HANDSOME



DON COLLUM

BECKY TIDWELL

SENIOR FAVORITES MOST POPULAR

JETTY HALL
RANDY SHELTON



BEST ALL AROUND

CARLA KINGSTON
JOHNNY PONDER

FRIENDLIEST

CONNIE ROBERTSON
WOODY PRIEST



MOST LIKELY TO SUCCEED

ANDREA LAMBERT
KENNETH JONES



BEST DRESSED

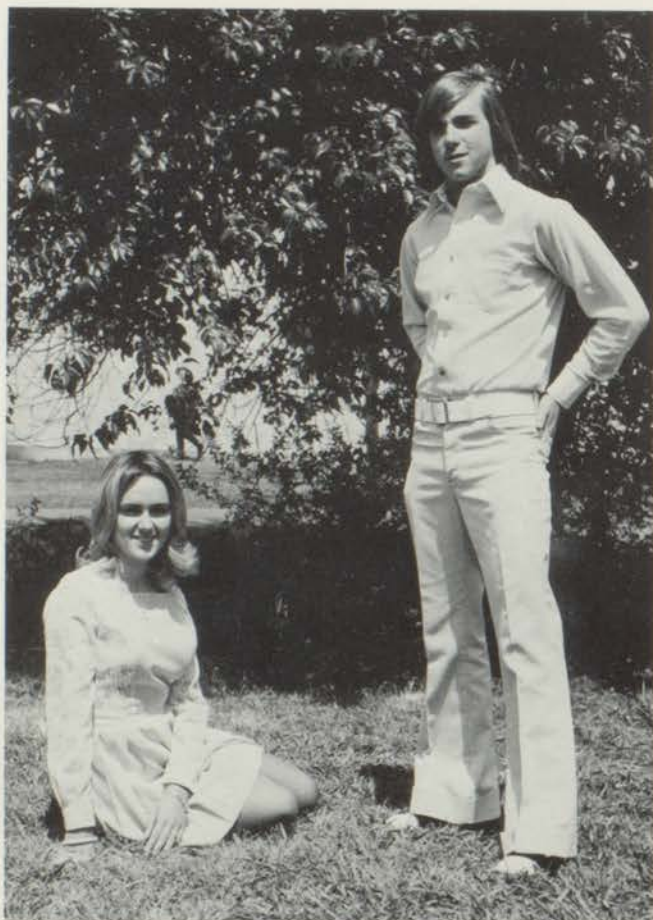
MARGARET ROBBINS
STEVE CASE

WITTIEST

CONNIE ROLF
GLENN GOODNIGHT

MOST ATHLETIC

BRENDA CAMPBELL
CARL REEVES



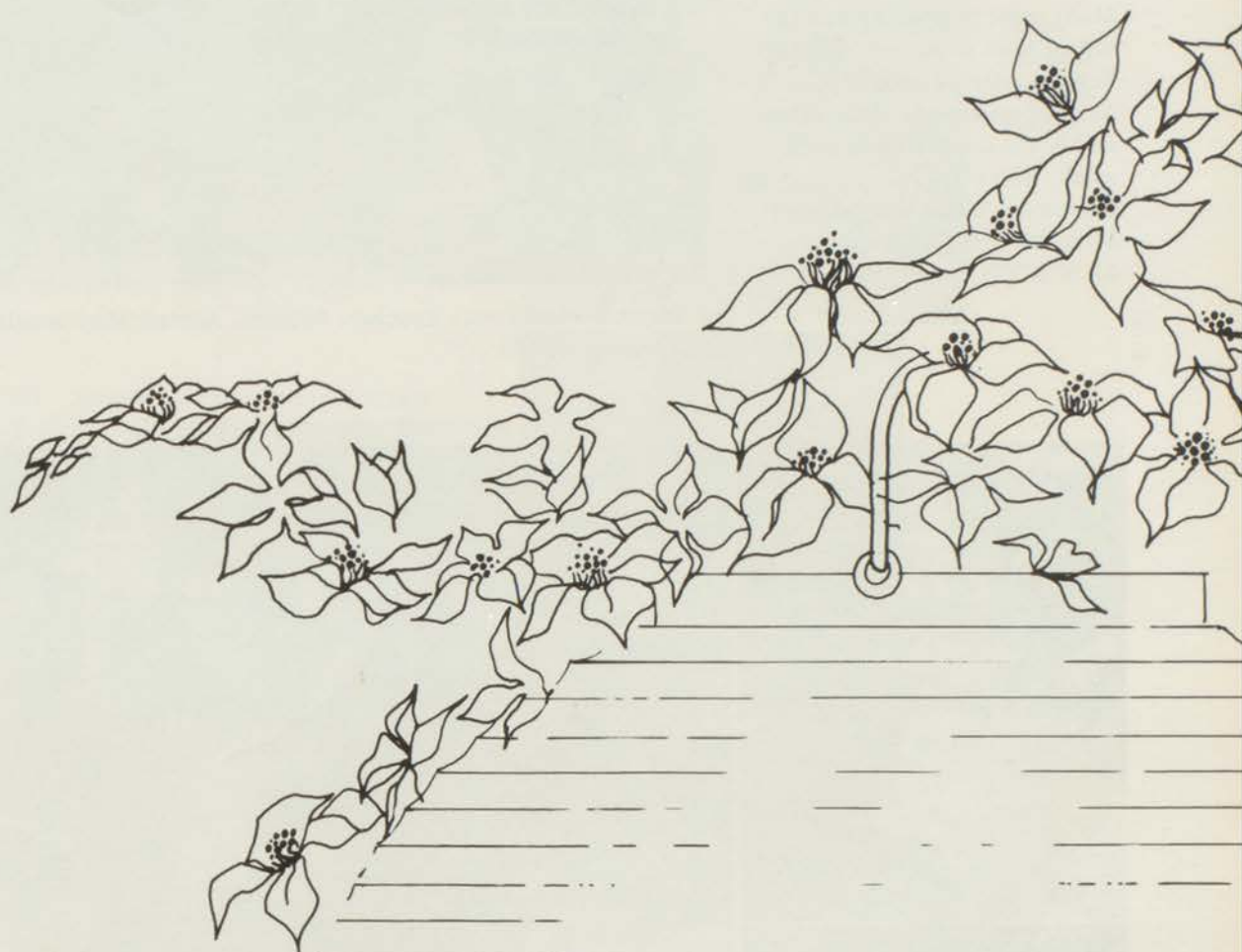
JUNIOR FAVORITES

SUZAN COOPWOOD
SKEET AMASON

SOPHOMORE FAVORITES

CYNTHIA REILEY
JEFFREY BARRETT

ORGANIZATIONS



hanging a lantern
on a blossoming bough,
what pains I took!



JOURNALISM CLUB — BUSY! BUSY!

This was the first year but a busy year for a journalism class. Many radio programs about the school were presented on KNBO. Several articles were in area newspapers as well as the ROAR and Bowie County News each week. The class also put together the annual which was changed from the PINE CONE to the LION'S DEN.



Editor Vivian Wood, Teacher, Sponsor, Adviser Mrs. Longino, Co-Editor Carla Arnold



Cindy Davis, Cindy Peterson, Margie McVay



Connie Rolf



Karen Vanderburg, Anne Oglesby, Brenda Barfield, James Cameron - Recording for KNBO.



Journalism Class Drinking Cokes?



Leona Lambert actually working

Juanita Ellis - Andrea Lambert Editor of ROAR



Mrs. Longino - wondering why the Journalism Class is not working.

Not a Journalism student but - oh so helpful.



Cindy Peterson
Girl Friday -
Bus. Manager

Jetty Hall - Typist - Margaret Robbins - Karen Vanderburg



SPEECH CLUB



President - Donna Terral, Vice-president - Donnie Boswell, Secretary - Shirley Goodwin, Treasurer - Jona Mahone, Reporter - Sherri Johnson



SPANISH CLUB



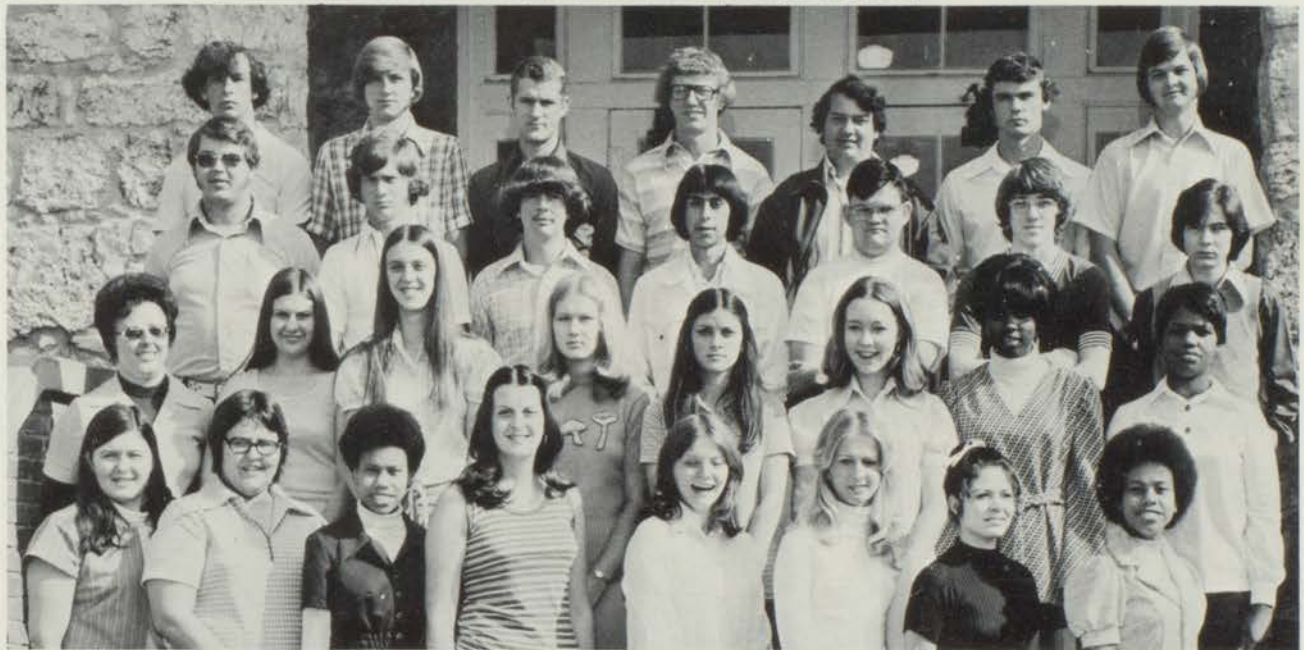
OFFICERS

President -
Debbie Heinrich

Vice-President -
Don Collom

Secretary-Treasurer -
Febbie Alley

Reporter -
Cris Neeley



STUDENT COUNCIL



Parliamentarian: Patsy Kegley
Historian: Carla Kingston

OFFICERS:

President: Johnny Ponder
Vice-President: Jetty Hall
Secretary: Karen Vanderburg
Treasurer: Tommie Hodge
Reporter: Becky Tidwell



REPRESENTATIVES: Seniors: Connie Robertson,
Esther Ellis, Mark Crawford, Lynn Wheeler.
Juniors: David Rolf, Chris Neely, Beverly Taylor,
Freddy Beauchamp



MR. VINSON (Sponsor)
Sophomores: Rickey Webster, Karen Higgs, Debra
Walker, Steven Wardell

Has A Busy Year!



Student Council attending Spring Forum in Winnsboro



Candidates for Student Council stayed busy before and after the campaigning.



What is this with wings?!?



I'm SO excited!!!



Sophomores win at last.



Ladies are escorted into their sound proof booths in the Cottage.

Anne Oglesby Serves As



State Sponsor - Mrs. Nan Longine - Margie McVay - State Corresponding Secretary - State President - Anne Oglesby



TALA OFFICERS: L TO R.: Karen Vanderburg - Secretary, Patsy Kegley - Reporter, President - Margaret Robbins, Connie Robertson - Historian, Jetty Hall - Parliamentarian, Tommie Hodge - Treasurer - Donna Williams, Vice-Pres. not pict.

SENIOR TALA MEMBERS



TALA State President



Anne Presiding



Cynthia Reilly District VI Historian



Junior Class TALA Members



Sophomore TALA Members



VOCATIONAL INDUSTRIAL CLUB OF AMERICA



President - Bruce Stinson, Vice President - David Rolf, Secretary - Christy White, Treasurer - Terri Hillis, Sgt. at Arms - Margie McVay, Reporters - Cindy Peterson, Gwen Moss, Gay Lewis



VICA IN ACTION



Rickey Adams
O. B. Perkins Body Shop



Skeet Amason
D & M Supply



James Cameron
KNBO Radio



Larry Daniel
New Boston Paint
and Body Shop



George DeMars
Crow Burlingame



Gay Lewis
Jean's Florist



Tim Little
New Boston City
Department



James Madewell
Wortham's
Grocery



Charles Mayes
Graham's Appliance



Keith Meador
Branson Plumbing



Steve Phillips
Bowie County
Farm Supply



Bruce Stinson
Kay Powell
Chevrolet

Barry Thompson
Western Auto



Red River
Employees

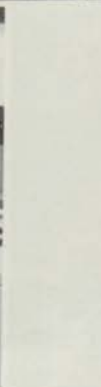
FUTURE HOMEMAKERS



President - Gay Lene Lewis; Sec. - Vivian Wood; Vice-Pres. - Connie Rolf; 2nd-Vice - Lillian Wood; 3rd-Vice - Christy White; 4th-Vice - Karen Vanderburg; 5th-Vice - Debbie Chandler; Treasurer - Vickie Shirley; Historian - Tommie Hodge; Sergeant-at-Arms - Jan Caldwell; Parliamentarian - Brenda Campbell



OF AMERICA



FUTURE FARMERS



BOTTOM ROW: Carlos Kingston - President, Jan Caldwell - Sweetheart, Marc Higgs - Vice President, Mrs. Lewis - Adviser. SECOND ROW: Monte Rowe - Secretary, Rusty Jones - Reporter, Bubba Haarmyer - Treasurer.



OF AMERICA



Ronald Prince - Dairy



Carlos Kingston - Dairy



Mark Allen - Dairy



Phil Williams - Beef



Ricky McClaran - Beef



Marc Higgs - Beef



William Lutes -
Feed Sales

Roger Lynch -
Horticulture



HOME AND COMMUNITY



HERO-FHA DELEGATES TO ENCOUNTER IMPACT WORKSHOP . . . ATLANTA: Kathy Roberts, Linda Jefferson



DELEGATES - AREA MEETING - COMMERCE: Gwen Poindexter, Inola Wade, Yolanda Reed, Linda Jefferson, Mary Griffin



FHA'ERS AT STATE MEET - DALLAS: Micki Lunceford, Gwen Poindexter, Gay Lewis, Sheryl Lindsey



Party-Time



HERO'ERS entertain Kindergarten



on Halloween.

SERVICES IN ACTION



Measure, mix, and cook



Learning Baby care



New hair-do



Surprise party, how many years???



Hamburger Supper



Burlap bags made in class



Dust and clean???

DISTRIBUTIVE EDUCATION CLUB OF AMERICA



STANDING:

- Historian - Pat Weatherford
- Reporter - Connie Rolf
- Parliamentarian - Kenneth Jones

SEATED:

- Vice President - Kay Lunceford
- Secretary - Elnoria Copeland
- Sgt. Arms - Tommie York
- President - Melba Cornelius

NOT PICTURED:

- Treasurer - Becky Haarmeyer



**OUTSTANDING DECA
GIRL AND BOY:**
Melba Cornelius
Kenneth Jones



Angie Burkhalter
Dairy Queen



Junior Tefteller
Piggly Wiggly



Sherri Martin
Acker's Pharmacy



Kay Lunceford
Forrester's Fabrics

COOP STUDENTS IN JOB TRAINING



Becky Haarmeyer - Cheryl Lindsey
Kiddie Corral

Kenneth Jones - Rickey Atchley -
Chuck Simmons - Texarkana

Connie Rolf
Perry's



Lillian Wood
McCoy's Drug

Roger Gray
Texaco

Elnoria Copeland
Acker's Pharmacy



Scooter Jett
Birdwell's

Melba Cornelius
Taylor's Dress Shop

Tommie York
York Grocery



Nancy Henderson - Steve Case
Red River Army Depot

Leslie Rodden
Handy Dandy

Lab Students

VOCATIONAL OPPORTUNITIES

THE PLEDGE OF THE VOCATIONAL OPPORTUNITIES CLUBS OF TEXAS

I pledge to endeavor to train myself by diligent study and ardent practice to become a worker whose services will be recognized as honorable by my employer and fellow workers.

I shall through honesty and fair play respect the rights of my employer, my instructor, and my fellow classmates.

I pledge myself to honor and respect my vocation in such a way as to bring repute to myself.

That my expectations of reward shall be based upon the solid foundation of service.

I shall spare no effort in upholding the ideals of my training organization and the Vocational Opportunities Clubs of Texas.

PREPARING TODAY FOR THE WORLD OF WORK



CLUBS OF TEXAS



NBHS WINS DIST. UIL LITERARY TROPHY

Mrs. Shaddix, sponsor, pinning medal on Shirley Goodwin, third place winner in typing in the state.



TYPING CONTESTANTS: Shirley Goodwin 1st Dist., 2nd Regional, 3rd State, Mrs. Shaddix; Patricia Mitchell, 3rd Dist.



SHORTHAND CONTESTANTS: Carla Kingston, Mrs. Vinson, sponsor, and Cheryl Green



SCIENCE CONTESTANTS: Ronald Rudd, Mr. Dempsey, sponsor, Kenneth Jones, 2nd Dist., 3rd Reg., Ann Lynch, Theodore Mercer 1st Dist., 5th Reg.



SPELLING CONTESTANTS: Mrs. King sponsor, Mark Crawford, Ann Lynch, Cheryl Green, Debbie Heinrichs 3rd Dist.



SLIDE RULE CONTESTANTS: Andrea Lambert 1st Dist., Mr. Dempsey sponsor, Debbie Heinrichs 2nd. Dist.



NUMBER SENSE CONTESTANTS: Theodore Mercer, Mr. Thompson sponsor, Patricia Tyson, Mark Crawford 2nd Dist.

ONE-ACT PLAY CONTESTANTS 2nd DIST.: Mrs. King, Brenda Barfield, Woody Priest, Kenneth Jones All-Star Cast, Diane Perkins, Carla Kingston, Vickie Owen, Best Actress, All-Star Cast.





JUNIOR HIGH

in the water I draw up
glitters the beginning
of spring



HIGH FACULTY

R. B. TURNER — PRINCIPAL

This was Mr. Turner's last year to be principal for the New Boston Junior High School. We appreciate the dedicated years of service he has shown to our public school system. Mr. Turner will have served 29 years prior to his retirement.



Meg Shelton
Secretary



Nettie Alexander
P. E.



Nancy Butler
English



Picture
Not
Available

Ronald Compton
Agriculture



Richard Ellis
Shop



Harry Haggard
Coach



Frances Hawkins
Math



Joyce Hosman
English
Librarian

JR. HIGH FACULTY MEMBERS



Ozella Jones
Science



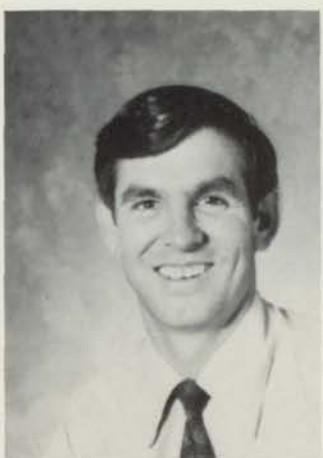
Jan Moser
Social Studies



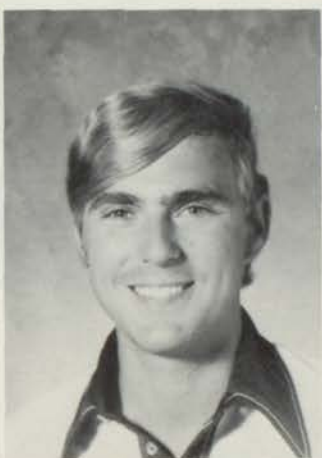
Claressa Nix
Homemaking



Millidge Oglesby
Spelling
Reading



Charles Patton
Math



Gary Schiffner
Coach



Mary Lou Stotts
Science



Sybil Thompson
English



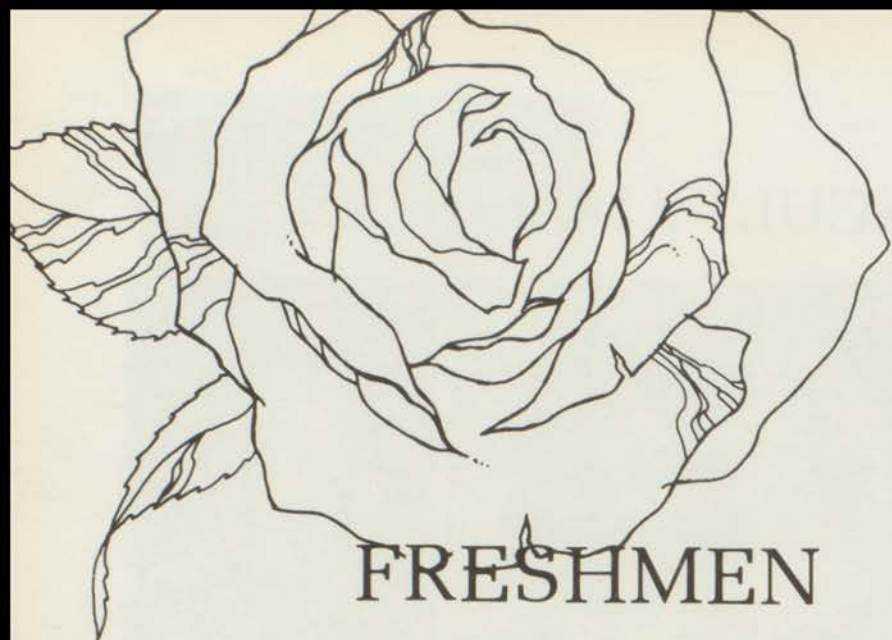
Oretta Turner
Social Studies



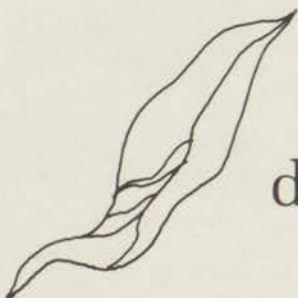
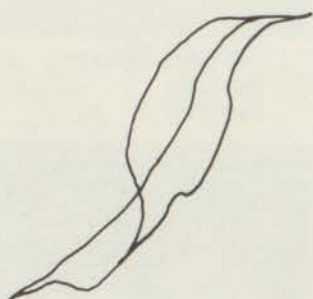
Gary Waldon
Math



Edna Wommach
Social Studies



FRESHMEN



simple trust;
do not the petals flutter down
just like that?

FRESHMAN CLASS OFFICERS



President: Kerry Barling
 Vice-President: Susan Simpson
 Secretary: Micki Lunceford
 Treasurer: Sharon Purtle
 Historian: Onetta Forte
 Reporter: James Nabours



Jeffery Allen R. V. Alley Annette Ainsworth Scott Atchley Debbie Banks Kerry Barling Terry Barrett Micheal Bell



James Benton Debbie Bledsoe Shelia Briggs Jay Brooks Janet Burns Jeanne Burns Loyd Burns Timothy Butler

To Look, Search, And Find



Terry
Capps

Kay
Carter

Eddy
Chadwick

Matt
Chadwick

Johnny
Cockrum

Vicki
Cowley

Richard
Cramer

James
Crawford



Tommy
Crawford

Tony
DeMars

Doug
Derrick

Jana
Ickens

Wanda
Edmond

Kriss
Fannin

Tim
Flournoy

Helen
Flournoy



Onetta
Forte

Lisa
Foster

Ricky
Fowler

Becky
Freeman

Ed
Gadberry

Keith
Garton

Nathaniel
Gooden

Claude
Grider



Mary
Griffin

Willie
Hall

Lisa
Harris

Larry
Hillis

Alan
Hilton

Lee
Hilton

Randy
Hilton

Rickey
House



Randy
Hurdle

Bill
Hurt

Betty
Jackson

Linda
Jefferson

Ricky
Johnson

David
Jones

Joe
Jones

Sarah
Jordan



Jimmy
Kilpatrick

Arthur
Kingery

Erma
Lockett

Richard
Long

Micki
Lunceford

Cheryl
Lynch

Donna
MacFall

Donnie
McChester

A Never Ending Task



Narva
McCommas



Ricky
Donald



Darrell
McGregor



Susan
McKay



Lesa
McMillian



John
Martin



Arlene
Megason



O. D.
Miller



Helen
Mitchell



Bob
Murry



James
Nabours



Monte
Neely



Wyvonne
Norstrum



Rickey
Norton



Phil
Oglesby



Sandra
Patterson



Lyn
Peek



David
Perry



Jill
Prock



Sharon
Purtle



Jill
Raney



Marvin
Raney



Marie
Raney



Mary Jo
Reed



Yolanda
Reed



Junior
Riley



Robin
Rodden



Julie
Rood



Darrell
Rowden



Lynn
Saegert



Glyn
Saegert



Kenneth
Sheppard



Tammy
Shipp



David
Shute



Susan
Simpson



Carolyn
Smith



Daniel
Smith



Brian
Stubbs



Marvin
Taylor



Jerone
Teddleton



Ronny
Terral



Vickie
Terral



Jeff
Thom



Tracy
Thomas



Ricky
Turner



Connie
Vanderburg



Joseph
Wade



Jill
Waldrum



Dan Walker

Gregory Walker

Renee Walters

Cara Mae Washington

Judy Whiteman

Floriene Williams

Joe Williams

Ronny Williams



David Willis

Dennis Wilson

Vicki Wilson

Cynthia Woodard

Sarah Yates

David York

EIGHTH GRADE



Wayne Adams

Stacy Addington

Gail Anderson



Jackie Ashby

James Barber

Susan Barfield

Kayla Barling

Rose Barnard

Teresa Benton

Susan Betterton

Sharon Bickle



David Boone

Catherine Bowers

Teresa Briggs

Dena Britton

Steve Brooks

Mike Burleson

Rhonda Burleson

Donald Burns



Mark Burns

Ronald Burns

Vance Burns

Tammy Caldwell

Mike Chadwick

Rudy Chandler

Danny Chisum

Judy Copeland

As The Trunk Grows The Tree Expands



Cathy Cramer Liz Cramer Tammy Day Linda Dollar Zona Ellis Rhonda Ensey Teresa Farrar Michelle Fisher Sandy Forrester



Gwen Fowler Julie Fox Clark Freeman Willie Gladney Jayma Gray Geri Green Donna Grider Cecil Griffin Kenneth Griffin



Robert Griffin Ricky Griffith Christy Hall Richard Hall Bryan Hanna Robyn Harmon Brady Hawks Gregory Haywood Larry Heinrichs



Sandra Heitz Rusty Higginbotham Angela Hillis Hal Hillis Ricky Hilton Tena Hilton Jimmy Howell Miles Inman Tena Johnson



Derral Jones Karla Kennedy Stephen Kestler Kathy Kilpatrick Pete King Kenneth Lambert Billy Lancaster Brenda Lawrence Dale Lee



Renée Lee Ann McAnally Lynn McElwee Desmond McFall James Mahone Stephanie Mahone Karen Manor Jeff Martin Karen Matthews



Timothy Meads Christine Megason Diana Megason Buster Mitchell Terry Morris Rosalind Noel Charles Parker Janice Perry Gwen Poindexter



Sharon Pool Randy Rawls Vickie Reed Louise Ridgeway Johnnie Riley Jim Robertson Joe Rose Paula Rowe Samuel Sanders



Otis Scott Kenneth Shepherd Erwin Shields Willie Shields Ricky Shirley Charles Smith Letha Smith Mark Smith Rita Smith



Kenneth Stewart Pam Stieb Barry Storey Ron Stroman Rhonda Terral Karen Thompson Victor Thompson David Turner Paul Wade



Kim Waldrum Jack Walker Martha Walker Ronald Walker James Waltz Ron White Pam Williams Kent Wills Bobby Wilson



Larry Wise Connie Woods Paul Young Rita Davis

SEVENTH GRADE



Anita Alexander Lisa Austin Jamie Baird Rhona Baldwin Michelle Ballew Chatigny Barber Donna Barling Jeannie Barnard Maria Bookout



Kelley Branson Lorie Briggs Keith Briggs David Brooks Ricky Burns Rex Capp Randy Carter Angela Chadwick Lori Cockrell



Larry Coleman Harvey Cornelius Cindy Crawford Linda Crow Mable Crowell Jean Culberson Jerry Davidson Jeff Davis Tanya Dedmon



Regina Dillard Robert Dillard Linda Downs Randy Dyer Beth Eubank Sheran Fields Pam Fowler Connie Fowler Karla Garton



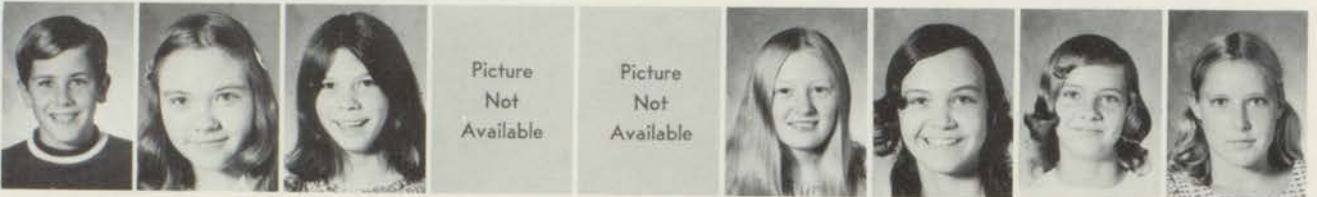
Donna Gaunt Sundra Gladney Sandy Gossett Tony Griffin Jenean Hillis Debbie Hilton Leda Hilton Deborah Holden Patricia Horn



Deborah Howell Melba Hurd Linda Hurt Sandra Johnson Joe Johnston David Kegley Mark Kincaid Steven LaRue Connie Lawrence



Leola Liggins David Lynch Shelia McCarter John McCommas Sue McDonald Kelly McElwee Billy McIntyre Donna McKay Keith McPherson



Odis Martin Gail Mays Bobbie Megason Stanley Merriman Curtis Mitchell Zelda Mitchell Lisa Neaves Kim Norton Beth Olson



Curtis Olson Ricky Olson Robin Olson Ray Patterson Ross Penny Mike Peppers Monte Pierce Lisa Poe Jerry Potts



Kevin Prock Mike Reece Karen Roberts Tammie Rosser Billy Rowden Connie Ruff David Saegert Cathy Sanders Rickey Sanders



Bridget Scott Tammy Scott Gary Shirley Ronald Simmons Cherry Smallwood Hershall Smallwood Allen Smith Glynn Smith GuJuan Smith



Jonny Smith Tina Sowell Rodney Stone Bret Stubbs Carolyn Sturman Sandra Sturman Terral Teddleton John Terral Jim Pat Tohill



Doyle
Tower



Inola
Wade



Sharon
Walker



Deborah
Wardell



Vera
Warren



Sandra
Weather-
ford



Bruce
White



Rodney
White



Dale
Whitting-
ton



Anita
Williams



Mamie
Williams



Rodney
Williams



Danette
Willis



Connie
Woodward



Picture
Not
Available

Terry
Yarberry



Anthony
Jones



Mary
Jones



JUNIOR HIGH CHEERLEADERS



SEVENTH: Donna Gauntt, Mary Jane, and Jean Ridgeway

FRESHMAN: Miki Lunceford, Head, Annette Ainsworth, Oneta Forte, not shown.
EIGHTH: Tammy Caldwell, Kathy Kilpatrick, and Sharon Bickle



JUNIOR HIGH PEP SQUAD



NINTH GRADE MEMBERS



EIGHTH GRADE MEMBERS



SEVENTH GRADE MEMBERS

FRESHMAN FOOTBALL TEAM



8th GRADE TEAM



7th GRADE TEAM





“PRACTICE MAKES PERFECT”



FRESHMAN: KNEELING: Ronnie Williams, Manager, Nathaneel Gooden, Monte Neeley, James Benton, David Perry, R. V. Alley, David Shute, Manager. STANDING: Joe Williams, Paul Wade, Richard Cramer, David Jones, Danny McChester, Coach Charles Hensley.



8th GRADE: KNEELING: Ronald Walker, Darrel Jones, Joe Burns, James Barber, James Waltz, Samuel Sanders, Ray Parker. STANDING: Coach Harry Haggard, David Boone, Willie Shields, David Turner, Kent Wills.



7th GRADE: KNEELING: Jim Pat Tohill, Bryon Terral, Curtis Olson, Glenn Smith, Dale Whittington, David Kegley. STANDING: Coach Gary Schiffner, David Brooks, Ricky Sanders, Billy Rowden, Mike Reese, Coach Charles Hensley.

SEVENTH GRADE TRACK TEAM

KNEELING: Terry Cox, Rodney White, David Kegley, Jim Pat Tohill. STANDING: Joe Johnston, Gary Shirley, Glyn Smith, David Brooks, Mike Reece. Gary Schiffner coaches the track team.



EIGHTH GRADE TRACK TEAM: L. TO R.: David Turner, James Waltz, Jimmy Howell, Kim Waldrum, Clark Freeman, Kent Wills, Barry Storey, Rudy Chandler, Mark Smith, Bryan Hanna. KNEELING: Tim Meads, Mgr. Ronnie Walker, Darrel Jones, Wayne Adams, Donald Burns, Larry Heinrichs, James Barker, Victor Thompson, Bubba Ashly, Joe Rose. Coach Westfall coaches the eighth grade team.

Ninth Grade Cubs District 16AA Champs

K
e
r
r
y
B
a
r
l
i
n
g



TRACK TEAM: KNEELING: James Nabours, Tommy Crawford, Joe Wade, R. V. Alley, Monte Neely, Paul Wade. STANDING: Joe Williams, David Jones, Kerry Barling, Ronnie Terral, Joe Jones, J. C. Riley, Ricky Norton, Terry Capps. NOT PICTURED: Dan Smith.



440 RELAY TEAM DIST. WINNERS: R. V. Alley, Joe Wade, J. C. Riley, David Jones.



Joe Wade never defeated in Jr. Hi. Broad Jump.

Jerry Capps Dist. Intermediate Hurdles

James Nabours Shot Put.



MILE RELAY TEAM DIST. WINNERS: Paul Wade, Terry Capps, J. C. Riley, David Jones.

OTHER FIRST PLACE WINNERS:

880 Dash - Monte Neely;

100 Yard Dash - Joe Wade;

215 Hurdles - Terry Capps

SECOND PLACE WINNERS:

High Jump - Joe Williams;

440 Yd. Dash - J. C. Riley

THIRD PLACE WINNERS:

440 Yd. Dash - David Jones;

220 Yd. Dash - Joe Wade.

FOURTH PLACE WINNERS:

Shot Put - David Jones; Broad Jump - J.

D. Riley; 880 Yd. Dash - Dan Smith; 100

Yd. Dash - R. V. Alley; 220 Yd. Dash -

R. V. Alley

FIFTIES DAY





EIGHTH GRADE:
Mark Smith, Tammy Caldwell



JUNIOR HIGH FAVORITES

SEVENTH GRADE:

Rodney White
Mary Jones



NINTH GRADE:

Jill Waldrum
James Nabours

Junior High Future Homemakers of America

OFFICERS -

President. Susan Simpson
 1st Vice-President. Connie Vanderburg
 2nd Vice-President. Micki Lunceford
 3rd Vice-President. Cheryl Lynch
 4th Vice-President. Rebecca Freeman
 5th Vice-President. Vicky Terral
 Secretary-Treasurer. Tammy Shipp
 Historian. Betty Jackson
 Parliamentarian. Laura Jill Raney
 Sergeant-at-Arms. Terri Barrett
 Mother. Mrs. Joan Simpson
 Advisor. Mrs. Claressa Nix



JR. HIGH FFA



OFFICERS: President - David York; Vice-President - James Benton; Sentinel - Darrel McGregor; Student Advisor - Doug Derrick; Reporter - Larry Hillis; Secretary - Tim Butler



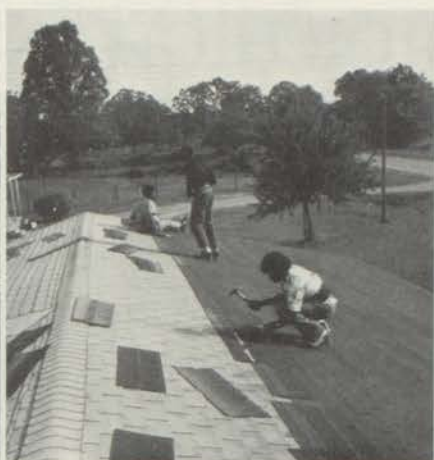
JUNIOR HIGH CVAE



OFFICERS

BACK ROW: Richard Ellis, Advisor; Ricky Sanders, Treasurer; Billy Jo Rowden, Secretary; Donnie McChester, President.
FRONT ROW: Donnie McCarter, Sgt-at-Arms; Robie Dillard, Parliamentarian; Rex Capps, Photographer; Mark Kincaid, Vice-Pres., Bruce White, Reporter.





JUNIOR HIGH SNAPS





ELEMENTARY

ah, how glorious!
the young leaves, the green leaves
glittering in the sunshine



OAKVIEW
SCHOOL
MR. JOHNNY
ALFORD
PRINCIPAL



MRS. LAVERNE STUBBS
AIDE

SIXTH
GRADE



HARREY
BANKS



Ronald
Burns

Jenny
Baker

Norma
Copeland

Terri
Cowley

Jacqueline
Crossland

Mike
DeLo

Ricky
Forte

Tony
Godwin

Mickey
Holt



Kelly Hopkins Peter Horn Scott Inman Wayne Jefferson Joe Lee Dwight Norstum Deborah Perry LaRuth Smith Connie Teddleton



Lanetta Thomas Larry Tidwell Brenda Wilson Darla Willis



MRS. GLADYS CORLEY

Young And Tender Buds Look To The Skies For Warmth To Produce Full-Grown Blooms



Edward Boone Mark Brooks Lisa Burns Jeff Butler Sharlan Coleman Lil Davis Judy Dickens Melissa Dillard William Durham



Jan Eaves Becky Fowler Joseph Godwin Bobby Gortney Tenner Griffin Connie Hilton Keli King Shepard Mayes David Merriman



Randy Owen Eddie Parrish Rebecca Reed Linett Richardson Tyrone Riley Gwen Sanders Mark Shaver Shirley Shaver Kenneth Sanford



Joe
Smith

Randy
Smith

Janice
Tidwell

Craig
Turner

Bonita
Wade

Billy
Warren

Debra
Whitting-
ton



MRS.
CORDELL
ELKINS



Russell
Alexander

Micah
Brown

Deborah
Burns

Teresa
Burns

Mechelle
Capps

Danny
Cloude



Donna
Cockrum

Linda
Collins

Veronica
Crawford

Jerry
Eckels

Jacqueline
Fagan

Leslie
Forrester



Gregory
Harmon

Charles
Heitz

Carolyn
Howell

Tammalyn
Johnson

Malia
Jones

DeAnna
Laney

Kelly
Martin

David
Meador

Ronald
Mills



Janice
Morris

Rebecca
Murray

Angela
Shelton

Steven
Stewart

Patricia
Teston



Mary
Thom

Tracy
Tidwell

Karen
Wheeler

Regina
Woodard

Jon
York



Mrs. Lynch's 5th Grade
29 days of perfect attendance



MRS. DOROTHY NELL
WATTS



Lorrie Ashby Arnold Barfield Kenneth Burnett Kent Cockrum Michael Coleman John Cowley



Lee Davis Deborah Davidson Stephen Gladney Dennis Green Janice Griffin Chad Hathaway



Linda Hillis Bobby Hurd Sandy Jones Julie King Gerane Lancaster Jan McNish Sherri Mitchell Sharon Noel Angie Perez



Tina Pollard Gary Sanders Danny Smith Mary Sue Smith Ester Taylor Anthony Turner Craig Turner Deborah Warren Steven Wicker



Eva Williams Glen Wisinger Denise Woods Carlton Yarberry



MRS. EVE LYNCH

FIFTH GRADE



Jeff Addison Cathy Baldwin Susan Brooks Brian Burns Shelia Caldwell Rhonda Cagle Jana Cunningham Christine DePue Geri Ensey



Susan Ford Amy Fox Gayla Eckels Keith Griffith Michael Foster Carla Grider Suzanne Hall Wanda Jennings Chip Lynch



Graylon MacFall Carol May Lisa Matthews Shelly McElwee Steven Oglesby John Pearson Dennis Raney Annette Sanders Randy Stieb



Marla Surratt Scott Thompson Richard Upson Joyce Young



MRS. LENA FRANCES
OGLESBY

Tender Young Branches Grow Strong In The Earth Of Education



Charles Bonham Vickie Boone DeWayne Dalby Phillip Dedmon Cathy Eubank Mark Forte Danny Fowler Melissa Grubbs Jeffrey Hall



Joy Hardage Kelly Jones Keith Kestler Dana Looney Mike Martindale Clifton McIntyre Judy McKay Geneva McNish Sondra Megason



Keith Mitchell Russell Olson Gary Pate Sammy Perry Mahona Pike Phyllis Shavers Dennis Shirley Annette Simmons Obie Smith

Blossom By Blossom The Spring Begins . . .



Douglas Stroman Paula Williams



Carolyn Birdwell Daphene Birdwell



MRS. CATHERINE McCOY RODGERS



Trashay Wisinger Deanna Woods



Victoria Burns Michael Carter



Todd Crocker Mark DeLo Cassandra Gooden Jacky Gooden Cornelia Griffin Michael Haarmeyer Robert Haywood Gregory House Tammie Lambert



Oma Maxey Lisa Mitchell Rickey Parker Billy Riley Elizabeth Smith Lanny Tidwell Paul Walker Lora West Steven Williams



MRS. ESTELLE WYNNE



Billy Bell



Daryl Cameron



Daniel Clark



Walter Davis



Tracy Ellis



Connie Heitz



Randy Hilton



Melvin Johnson



Lisa Laney



Maurice Jones



Gayla Marbut



Cynthia Mayes



Larry McPherson



Lauraenda Merriman



Rita Neaves



Velma Nelson



Robert Olson



Lisa Owens



Teresa Parker



Rosalyn Perry



James Pool



Ricky Reed



Anthony Riley



Lisa Ruff



Dennis Runnels



Harvie Smith



Katinya Smith



Gary Stringer



Angela Thomas



Teresa Walker



Carol Woodard

FOURTH GRADE



MRS. KAREN DAMRON



Tonja Boone



Patricia Briggs



Donald Clemons



Kim Cockrum



Elaine Crawford



Jeff Crow



Michael Day



Kevin Dedmon



Marie Durham



Dennis England Scott Fillingame Elizabeth Forrester Randy Fowler Toni Glover Evette Griffin Diana Griffin David Harper Maurice Hurd



Terry Jefferson Phyllis Jones Tammie Joyner David Lee Valeria Martin Andy McCarter Chequita Noel Melinda Olive Sherry Pierce



Josie Ross

THIRD AND FOURTH GRADE



Sheryl Messer



Judy Bell



Donald Shirley Sherry Williams



Keith Briggs



Kenneth Burns Charles Clark Jimmy D Dean Monica Faulkner Scott Fowler Traci Gauntt Melissa Hanna David Harmon Jackie Hillis



Sandra Jimison Jonda Littlepage James McKenzie Cynthia Megason Stephen Metcalf Grady Mitchell David Nelson Georgia Pearson Terry Sanders



Ronnie Smith

Delorise Willis



MARY ANN TIDWELL



Delores Gooden

Equilla Griffin

Viola Griffin



Donald Willis

Angela Young



Beverly House

Jeffrey Hubbs

Kayla Hubbs



Anita Johnson

Clyde McChes-ter

Don Nichol-son





OAKVIEW ANNUAL WINNERS



SIXTH GRADE - MRS. ELKINS



FIFTH GRADE - MRS. OGLESBY

SCHOOL EMPLOYEES



BUS DRIVERS: Rhitt Barfield, Floyd Cannon, J. V. Higgs, Joseph Brandon, Claude Hooker, Clarence Phillips, Barney Cannon



HIGH SCHOOL CAFETERIA WORKERS: Alfaralla Landers, Lily Manning, Effie Thompson, Jame Olson



JUNIOR HIGH CAFETERIA WORKERS: Sybie Cachrell, Lou Johnson, Dorothy Betterton, Mary Lynch



CRESTVIEW CAFETERIA WORKERS: Betty Graham, Barbara Smith, Hazel Noel, Irene Schuler, Lois Schiffner, Pearlle Fields, Irma Fields



HIGH SCHOOL:
Roy Jennings
Barnard Smith



JR. HIGH:
Joe Smith



CRESTVIEW:
Gerelene Jennings
Roger Henderson



OAKVIEW:
Bob Mitchell

CRESTVIEW
SCHOOL
MRS. BESSIE GRAHAM
PRINCIPAL



MRS. BARBARA
CRAWFORD
Teachers Aide

FOURTH
GRADE



MRS. VELVIE
McVAY



Joe
Baeza

William
Ballew

Sandra
Briggs

Karen
Crawford

Boyd
Garrett

Stephen
Harmon

Timothy
Harmon

Cara
Hathaway

Terry
Hillis



Felicia
House

Rosalyn
Johnson

Dwayne
Jones

Michael
Lybarger

Glenda
Mills

Teresa
Owens

Cindy
Paschen

James
Shaver



Elizabeth Shelton Tony Sheridan Nancy Smallwood Harold Smith Katherine Snowden Jacqueline Thompson David Tuck Annette Veale Kevin Walker



James Williams Steven Williams



MISS MARY OVERTON



Scarlet Barfield



Paula Wilson Wilbert Zellers



Billy Barling Shelia Brandon



Karen Cowley Debra Crawford Denise Davis Mary Fowler Jeff Fuller Millician Griffin Bruce Hurd Sandra Knight Joe Miller



Wesley Owens Pamela Parr Dwayne Raney Kevin Sladovnik Curtis Smith Donnie Smith Jimmie Smith Steven Smith Steven Soradlin



Brad Stephens Bruce Tidwell Pamela Turner Jerry Wade Cassandra Walker Verna Walker Joel Webster Nadine Whittington Kerry Wood

THIRD GRADE



MRS. MELDA DAVIS



Bobby
Bell

Joanne
Butler

Donna
Chadwick

Nancy
Cowley



Anthony
Dollarhide

Deborah
Duffer

Susan
Edwards

Gregory
Forte



Donna
Fowler

Tracy
Graham

Steven
Higginbot-
ham

Phillip
House

Jacinda
Jefferson

Jerry
Kenning-
ton

Rhonda
Lee

Jeff
Looney

Edd
McGill



Clifford
McMich-
ael

David
Parker

Sharon
Rattray

Debra
Riley

DeAnna
Roberson

LaJuana
Rochelle

Bennette
Sanders

Shelia
Saxton

Karla
Thompson



Timothy
Waldrum

Bryant
Walker

Jancie
White



John
Whitting-
ton

Ronald
Willis

Wayne
Benton

IN EARLY
SPRING
WHEN
BUDS
BEGAN TO
FORM AGAINST A
BLANKET
OF
GREEN



MRS. BERNIE MCMORD



James
Ward



Lori
Atkinson



Deedra Britton Jim Brown Michael Burns Marsha Culberson Gina Dalby Marvis Dedmon Hazel Ellis Kathy Forrester Mark Foster



Kelly Gravett Lori Hall Alan Hanna Daniel Johnson David Laney Sherri McPherson Rebecca Meads Alisa Morris Sherri Olive



Teddy Patterson Vivian Perez Karla Potts Amy Raney Regina Raney Karen Rattray Carla Ruff Richard Steward Derrell Walker



Joyce White Michael Wolfe



MRS. NAN MOSELY



Janet Batchelor Mikki Bodeker Cheryl Burns

Babes In The Woods Need Love And Guidance



Jeff Chambliss Kevin Coleman Pamella Conkleton



Camille Cowling Randy Culberson David Eason Tammy Gortney Wanda Griffin Alex Griffith Lynn Hilton Carol Hubbs Maxie Kimbriel



Teena Lambert Josetta Lindsey Ann Oglesby Scott Overstreet Cleo Phillips LaWanna Pike Rodney Rice Becky Saegert Mirita Sanford



Juanita Thompson Angelia Turner Melissa Wade Lance Walker Vance Wendell Andy Williams

SECOND GRADE



MRS. PHYLLIS BRUTON



Eddie Crawford Robert Dean Vincent Forte Karen Foster Della Fowler Jackie Gauntt



Derrick Gooden Carelyn Griffin Don Griffin James Griffin Michael Haywood Daron Jones



Vicki Kirkpatrick Cecial Perry Ronnie Richardson Emmitt Roberts Fred Smith Gail Smith



Bobby Taylor Letetia Thompson Terry Watson Dennis Yarbrough

ABSENT
Marty Steward
Charlotte Duncan



MRS. EDNA CREGG



Robert Barling Randal Barton Susan Barfield Ella Conkleton Stephen Daniels Lisa Derrick Billie Eubank Charlotte Forrester Benjamin Griffin



Vinson Hardage Michael Harmon Terri Hatten Stephanie Heard Tracey House LaFonda Hubbard Jeffery Hurd Stephanie Jennings Lonnie Johnson



Dennis Jollies Cheryl Lancaster Leah Laney Dan Marbut Melinda Martindale Margo Nichols Nacha Olive Donna Parrish Steve Simmons



Chris Smith



THELMA NELSON



Billy Baird Timothy Baldwin Lisa Beggs



Ann Thiling Taylor Whittington



Lori Burns Cherri Capps Brenda Carter



Jackie Chisum James Cox Christina Durham Shanta Dyer Tonya Gooden Charlotte Hall Tammy Harmon Sandy Hathaway David Hillis



Dennis Holden

Gary Jennings

Sharmarion Noel

Rex Olson

James Parr

Tracy Riggins

Debra Rose

Janis Rowden

Ricky Smallwood



David Smith

Kevin Stroud

Ginger Terral



MRS. MARGARET TERRAL



Ronnie Andrews



Audrey Turner

Jeffery Wilson

Sidney Woodard



Reginald Austin

Kayla Brooks



Rhonda Culberson

Stephen Fillingame

Jeff Fowler

Mechelle Green

Kenneth Griffith

Ronald Harmon

Janis Harper

Julie Henry

Lorraine Hurd



Benethia Jefferson

Kevin Jones

Kim Joyner

Stephen Laurence

Susan Mitchell

Anna McKenzie

Andrew Phillips

Melford Pierce

Cynthia Porter



Darrell Shaver

Sherri Shirley

Dea Smallwood

Rebecca Stephens

Judy Stout

Paula Tankersley

Leigh Terrel

Latonia Walker

Ketrina Williams

FIRST GRADE



MRS. MARSHA DENTON



Sidney Aimes Tony Barber Sherri Bean Gary Burleson



Carolyn Cagle Amanda Conkleton Gala Cooper Jennifer Dempsey



Forrest Dillard David Fowler Robin Hall Kerri Harper Bobby Johnson Melandie Johnson Leon Jones Heith McDonald Shauna Muldey



DeWayne Parker Melinda Plunkett Sonya Potts Roger Rodriguez Andrewia Sanford Michelle Sanford Marie Shelton Patricia Smith Ronald Stringer



Shawn Thompson Sarah Jane Tidwell



MISS BETTY GIBSON



Melinda Atkinson Johnny Boone Thomas Briggs



Todd Upson Chester Pemberton



Deborah Cloude Douglas Crawford Jill Cunningham



Todd Davis Shellese Dull Ronald Gardipe Rufis Griffin Karenda Griffith Darrell Grubbs Wilma Hawkins Vickey Hurd Belinda Kingery



Tangie Mitchell Michael Parker Kim Phillips Connie Runnels LaSonya Sanders Patrick Smith Youbie Smith Scott Stieb Leesa Strickland



Kimberly Williams Mark Williams



MRS. EDITH MOSELY



David Austin James Beard



Rachel Willis Corilda Zellers

Absent
Photo not
Available
Lisa
Duncan



Tammy Beggs Melia Clark



Sharon Cooney David Dean Denise Douglas Tracy Fezell Tony Flannagan Kimberly Garton Betty Gooden Kimberly Hall Melynda Hanna



James Johnson Jervis Johnson Donna Martin Carol Mayes Richard Megason Jonathon Merri-man Stacy Mitchell Stacia Owen Andrew Parker



Spherino
Perez

John
Riley

Ronnie
Scudder

Kelley
Stephens



MRS. SUE REED



David
Andrews



Beverley
Thompson

Sherine
Wharton

Darrell
Williams

Darryl
Woods



Michael
Chisum



Gary
Dalby

Terry
Damron

Susan
DePue

Jamye
Duffer

Carol
Fox

Fredrick
Gooden

Tim
Graham

Chris-
topher
Grant

Jay
Green



Beverly
Harmon

Carol
Jump

Leanne
Looney

Steven
Lynch

Stephanie
Mathis

Roy Glen
Rice

Edgar
Roberts

Frances
Rose

Vanessa
Rowden



Brock
Sanders

Tracii
Shavers

Marteen
Smith

Kyle
Steward



MRS. ELTHIE MEADS



Jimmie
Nell
Sutton

Cynthia
Teston

Dana
Thomp-
son

Mark
Walker

Karen
Williams



Eric Austin Rebecca Arnold Kirk Brooks Renee Chisum Monica Coffman Tommy Cowley Vicki Davidson Kenneth Durham Van Goodwin



Robert Hillis Caroline Johnston Tena McDonald Carolyn Mitchell Loran Mocny James Murphy Annette Perry Ann Rice Timmy Smith



Mary Ann Stone Keith Thompson Robbie Wooten



MRS. JAN MURDOCK



Neal Brantley Lane Breshears



Lisa Campbell Eleta Clark



Scott Cooper Donna Cowley Wade Cowling Monica Drayton Charlotte Ford Stacey Gravitt Marla Hanna Karen Horn Johnny Hurd



Shannon McCoy Angelia Mitchell Amy Roseberry Steve Sladovnik Janet Smith Jay Stewart Eric Turner Danny Warren Willie Pane

Picture Not Available

SECOND SEMESTER KINDERGARTEN



TEACHERS: Mrs. Mead and Mrs. Murdock.

Cheryl Michelle Allen, Michelle Atkinson, Jason Beggs, Norris Deon Betts, Deanna Blalock, Michael Bounds, Anna Marie Burns, Douglas Conkleton, Bryant Crutchfield, Rickey Tommy Darden, Jacqueline Dedmon, James Michael Derrick, Shane Green, Marry Griffin, Rhonda Ann Hanson, Jimmy Don Holder, Rhonda Denise Hurd, John Austen Jacobs, Laura James, Steven Jennings, Linetta Ann Johnson, Barbara Lynn Jones, Stephen Lee Mayes, Dona Morton, Donna Nottley, Zane Ty Olson, Karen Marie Parker, Tonia Pierce, La Manna Pike, Barbara Pool, Ben Reed, Sheri Lynn Richardson, Cheryl Russell, Tammy Lou Sanders, Gregory DeWayne Shields, Renee Tanner, Andrea Darlene Taylor, Michael Lee Taylor, Tracy Michelle Wade, Bobby Ward, Lisa Lynette Wendell, Kristy Williams.



ELSIE F. BOLGER



JOHNNIE H. MATTHEWS



JOAN
SIMPSON
Aide



CHARLES
R.
HENSLEY
P.E.



Darrel
Crowder



Steven
Forte



Darrell
Griffin



David
Griffin



Billy
House



Wayne
Ross



Ed
Smith



Jeffrey
Thompson



Debra
Wade



Angela
Jackson



Darlene
Carter



Janice
Gooden



Richard
Griffin



Bryant
Henderson



Doris
Edmonds



Sue
McChester



Mattie
Ann
Ford



Leon
Ford



Marilyn
Rose



Mary Sally
Smith

RUTH
KNIGHT
School Nurse



PRECIOUS
HERVEY
Music



ANNUAL WINNERS — FOURTH GRADE — MRS. OVERTON



ANNUAL WINNERS — SECOND GRADE — MRS. TERRAL



CRESTVIEW ANNUAL WINNERS



FIRST GRADE - MRS. MOSELY



THIRD GRADE - MRS. McCORD

Our Most Loyal Supporters

THE FIRST NATIONAL BANK

New Boston, Texas





WIMPY'S 7-11

Convenience Shopping
365 Days A Year

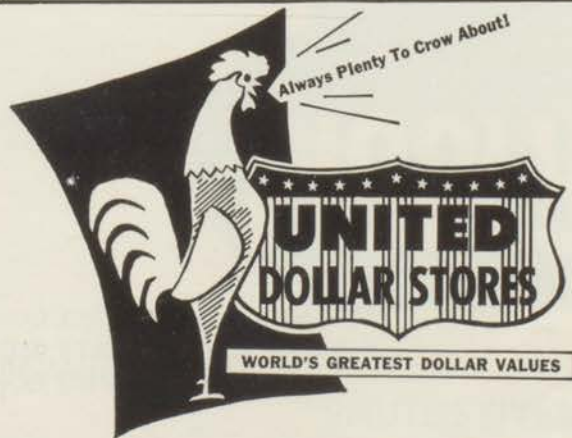
Ph. 628-3871

New Boston



MCCOY'S PHARMACY

New Boston



Protection is vital



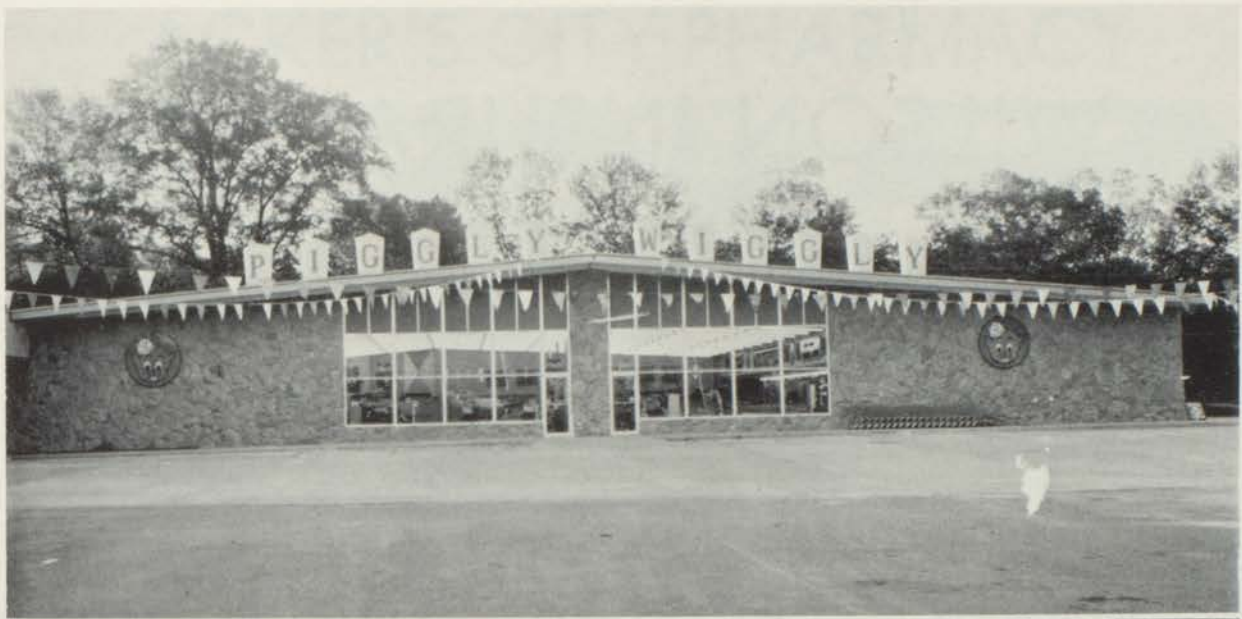
For the quarterback, and for you every day, protection is vital to the fulfillment of your goals. Look to the Shield of Shelter for help.



REX STONE, JR.
Agent

118 N. Ellis
New Boston, Texas
628-5085

MFA MUTUAL INSURANCE CO.
COUNTRYSIDE CASUALTY CO.
MFA LIFE INSURANCE CO.



PIGGLY WIGGLY

BOWIE LANES

SHUTE'S WASHATERIA
SHUTE'S FIVE MINUTE CAR WASH

WILSON INSURANCE AGENCY

JACK WOODWARD

New Boston

LOYD WILSON



WOOD MOTOR COMPANY

Phone 628-2513

New Boston

ACKER'S CITY PHARMACY



Everything a Good Store Has

Ph. 628-2537

New Boston



Congratulations to Our Seniors

FIRST BAPTIST CHURCH

ATKINSON and WILLIAMS

INSURANCE AGENCY

103 N. Ellis

New Boston, Texas 75570

Phone (214) 628-2801

Hamp Atkinson
Texarkana (214) 838-8545
New Boston (214) 628-3232

Wynn Williams
Hooks (214) 547-2301
Texarkana (214) 838-6296



WESTERN DISCOUNT STORE

Doyle Eaves
Owner

115 N. Ellis St.

New Boston

Ph. (214) 628-3461



BOSTONIAN MOTEL & RESTAURANT

Jake and Ouida Davis — Owners and Managers

Ph. 628-5561 or 3476

New Boston

Hwy 8 — I-30



KAY POWELL CHEVROLET and MOBILE HOMES

Phone 628-2521

New Boston



RONNIE LOONEY INSURANCE AGENCY

Auto — Truck — Fire — Commercial & Life

Bus. Ph 628-3996

New Boston

Res. Ph. 628-2294



MOBIL OIL DISTRIBUTOR

Steve Murdock
Ph. 628-3191
New Boston, Tex.

Howard Mosley
Ph. 501 - 773-6505
Texarkana, Ark.



Give Our School a Break, Support It

PARKER'S AFFILIATED STORE

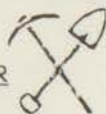
Ph. 628-2701

New Boston



MURRAY HANDLE CO.

LEON ARNOLD, OWNER AND OPERATOR



WAREHOUSE 214 838-4902
OFFICE PHONE 214 628-5025

REPLACEMENT HANDLES FOR TOOLS

P.O. BOX 173 NEW BOSTON, TX. 75570



DAIRY QUEEN

PHONE
628-3881

NEW BOSTON, TEXAS

ELKINS CAR WASH



Fine Foods
at
**COX'S GROCERY
AND
MARKET**

Friendly Service

Phone 628-3171

WESTERN AUTO STORE

The Family Store

Ph. 628-3496

New Boston





BARFIELD AND SIMPSON TEXACO STATION

Courteous Service

New Boston

215 N. Front

ARNOLD BARFIELD GULF DISTRIBUTOR

Phone 628-2311

Hwy. 8-N



CHUCKWAGON RESTAURANT

Delicatessen
Bar-B-Que

Ph. 628-3551

Downtown
New Boston





WHITE AUTO STORE

Home of Greater Values

Ph. 628-2274 - New Boston

BARFIELD'S

Butane - Propane
Furniture - Sales
and Service

109 North Elm Street

Ph. 628-3261

New Boston



Compliments
of

THE SHOE CASE

Oaklawn Village - Texarkana



Mr. J. E. Laney, Sr. Editor

THE BOWIE COUNTY NEWS

New Offset — Progressing
With New Boston
Wedding and Shower Invitations
Wedding Accessories
"Oldest Publication in Bowie County"
Since 1882

136 N. Elm St.

New Boston

BOSTONIAN GULF

Glenn Cunningham
Dealer

IH30 — Hwy 8

Ph. 628-9937

New Boston



PAINT AND BODY SHOP

Phone 628-3721

140 Main Street

New Boston, Texas



BOWIE COUNTY *Savings and Loan Association*

117 North Ellis
NEW BOSTON, TEXAS 75570
(214) 628-2593

OFFICE HOURS
9:00 - 4:00 Monday - Thursday
9:00 - 6:00 Friday

- Home Mortgages
- Savings Accounts
- Certificate Savings
- Share Loans
- Home Improvement Loans



"It Does make a Difference Where you Save"

PERRY BROTHERS VARIETY STORE

Jamie Johnson
Manager

New Boston Shopping Center



RON'S EXXON

I-30 — Hwy 8

New Boston



FEAZELL INSURANCE & REAL ESTATE

NEW BOSTON ACE
HARDWARE STORE
SPEED QUEEN
WASHATERIA



BIRDWELL'S

From Foundation to Roof
Your Hardware, Paint,
And Supply Dealer

Across from Court House

W. R. BIRDWELL
EMMA C. BIRDWELL

Ph. 628-2761

New Boston



ATCHLEY'S BARBER SHOP

Men's Hair Styling

Ph. 628-3821

New Boston



GLENDAS FLORIST

P.O. Box 606

114 Main

New Boston, Texas 75570

Phone 628-5516



JOHN WILLIAMS

New Boston

GRIFFITH'S GULF

Minor Tune-Ups
Brake Work
Wrecker Service

Ph. 628-2171

New Boston





LESLIE VAUGHAN'S
SHELL

Mechanic on Duty — Motor tune-up — Brake
Service — Batteries. We install mufflers. Ignition
services — Batteries — Brakes
Pick-Up and Deliveries
7 Days a week — 6 A.M. — 10 P.M.
Good Selection of Parts.

Road Service Phone 628-9929 Goodyear Tires



BRANSON'S
PLUMBING
COMPANY

120 W St.

New Boston

Men's Wear
Ladies Wear

J.B. WHITE CO.
"AHEAD WITH BETTER VALUES"

Home Goods
Shoes

Your Complete Department Store
Serving 39 Texas Towns
Especially New Boston

BATES-ROLF
FUNERAL HOME

New Boston





WORTHAM'S FOOD STORE AND MARKET

Home Of Choice Meats

Ph. 628-2031

New Boston



JOHNSON'S
TEXACO

I 30 — Hw 8

New Boston



Congratulations
1974 Seniors

TAPP MEMORIAL METHODIST CHURCH

GHOLSTON'S CLEANERS

Cleaning Pressing

Ph. 628-2041

New Boston

ANN'S FASHIONS

Ladies Ready To Wear

123 North Ellis St.

New Boston

SHELTON FEED AND FERTILIZER

Seeds and Insecticides
Call Us for Your Needs

Ph. 628-2178

Hwy 82 West

New Boston

Entertain Your Friends With A Fabulous
MARY KAY BEAUTY SHOW

Featuring "Beauty By Mary Kay" Cosmetics

At your convenience — in your home — for yourself and your guests. Each person attending will be instructed in correct beauty procedures, receive a complimentary facial, along with the latest technique in make-up artistry.

Call: **Laura E. Looney, Beauty Consultant**
109 No. Merrill
New Boston, Texas
628-3427

**BOSTON HAIR
FASHIONS**

Merrill Street Across from
Courthouse

Phone 628-3326

Boston

D & M SUPPLY

Building Supplies

Ph. 628-2831

New Boston

SHIRLEY'S ENCO



100 South Elm
New Boston, Texas

**GRAHAM'S
APPLIANCE COMPANY**

Air-Conditioning
Sales and Service

New Boston

**YOUR TROUBLES
VANISH**



**LYNCH'S
GARAGE**

Ph. 628-2251

**M & L CLEANERS
&
APPAREL SHOP**

Quality Assured

Phone 628-2131

New Boston

**DALE BUTLER'S
GARAGE & GULF
SERVICE**

BIG "T"

Custom Upholstery

Hwy. 82 W.-2 Miles W. of New Boston

Reasonable Prices

Free Estimates

Pick Up and Delivery

Large Selection

of Fabrics

Phone 628-3626

JOE OGLESBY'S PHILLIPS 66 STATION

Groceries

Gas — Oil and Sundries

Hwy 82 West

New Boston

Ph. 628-2791

Say It With Flowers
From

JEAN'S FLOWERS

Ph. 628-2756

New Boston

JO'S HAIR DESIGNS

Jo and Lee Sturgeon

202 Main

Ph. 628-3661

FORRESTER'S FABRIC

Specializing in Double
Knits

All Types of Sewing Notions
and

Butterick Patterns

207 E. N. Front

New Boston



SEARS AUTHORIZED
CATALOG SALES
MERCHANT

Owned and Operated
by
DEWAYNE HARDAGE

121 North Ellis
Phone 628-2595
667-3761

New Boston

DeKalb

WILLIAMS HAN-D-STOP

309 E. Hoskins

New Boston

628-2471

THE HAT SHOP

Fashionable Ladies'
Ready-to-Wear
and Fabrics

At Reasonable Prices

Ph. 628-2186

New Boston

MOBIL SERVICE STATION

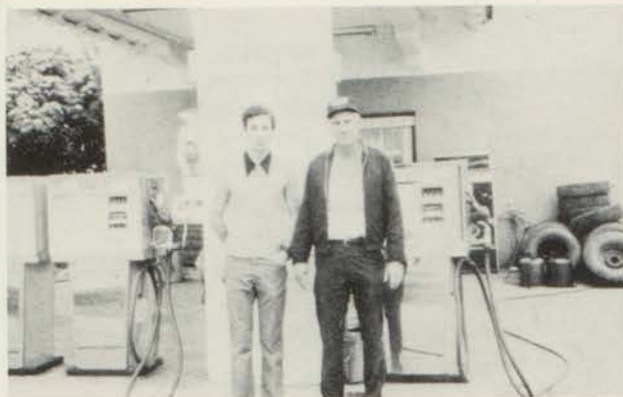
C. R. Young Jr.



628-2371

New Boston

201 N. Front

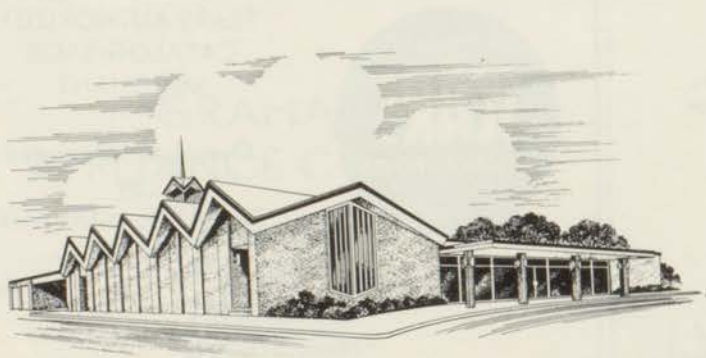


NEW BOSTON MOTORS

Chrysler, Plymouth
Dodge

Ph. 628-2527

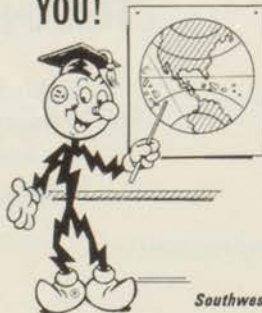
New Boston



Compliments
of

TEXARKANA FUNERAL HOME

The Future Belongs To YOU!



*A milestone has been passed.
Now you're ready to face the world
— make your contribution.*

We at SWEPCO congratulate you.
We are proud to be a part of your
community and to be of service.
You can count on electricity — it's
dependable.

Southwestern Electric Power Company **SWEPCO**
Your Electric Company Partner

It's the real thing. Coke.

Trade-mark ®



TEXARKANA COCA-COLA BOTTLING COMPANY

1930 New Boston, Rd.



WILLIAM C. WADE
Agent

Off. Phone: 794-5522
Res. Phone: 773-4366

See me for all your family insurance needs.

1420 Texas Blvd.

Texarkana, Texas 75501



© BORDEN, INC.



TM

**QUALITY
MILK AND
ICE CREAM**

Borden, Inc.

Box 581
Texarkana U.S.A.



ALLIED Termite and Pest Control

LICENSED · BONDED

P. O. BOX 83
TEXARKANA, TEXAS 75501

TELEPHONE 794-5212

"Save with us... that's SECURITY!"



Three offices to serve you: Downtown/Oaklawn/North State Line

MOJA LINDSEY, Pres.

Texarkana



"Where Brides are Treated Like a Queen"

2604 New Boston Road
Dorothy Schelkopf

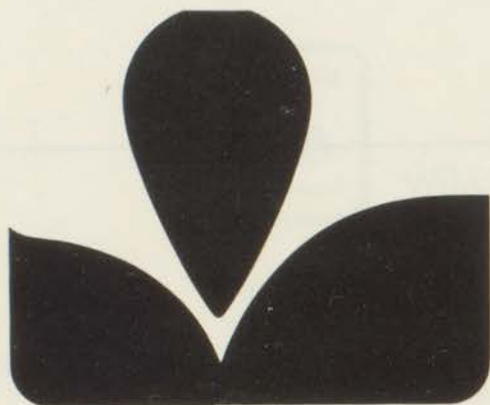
BRIDAL CASTLE

Texarkana, Texas 75501
Phone (214) 793-4352

Compliments
of
**EAST FUNERAL
HOME**

Texarkana

Texas



**MIDWEST FARMS
DIVISION OF
THE SOUTHLAND CORP.**

Texarkana, Texas



**Continental
Bus Center**

Ph. 774-5163



Texarkana

**CONTINENTAL BUS
CENTER**

Phone 774-5163
in
Texarkana



CHUCK SIMMONS

Will Tell You the
Gift is Right When It
Comes From the
CANDLE LITE GIFT
SHOP

The **TEXARKANA NATIONAL** Bank

TEXARKANA, TEXAS 75501



**BUHRMAN-PHARR
HARDWARE COMPANY**

BEST PAINT SOLD

BPS

211-220 Laurel St.

Texarkana

It Pays to Buy Good
Shoes
At

Walson's
GOOD SHOES

Texarkana's Leading
Family Shoe Store
"Since 1916"

121 E. Broad

Pho. 774-2729



"The Oldest the Best"
Free Estimates

Mattress Renovating
Furniture Upholstering

1920 Milan

Ph. 214 — 794-5421

Texarkana

RAGLAND

OFFICE EQUIPMENT

311-313 Main St. Texarkana



JEWELERS

113 W. Broad Ph. 794-7681
Texarkana

G # Sharp Music

"Your Franchise Baldwin Dealer"

EVERYTHING MUSICAL

1415 State Line Phone 793-2411
Texarkana, U.S.A.

BAPTIST BOOK STORE

Books — Bibles — Literature — Novelties
Now Two Locations to Serve You

214 East Broad 4605 North State Line
Texarkana Phone 792-2783

(214) 838-5555

George's Magnavox

HOME ENTERTAINMENT CENTER

GEORGE LITTMAN
Owner

1919 N. ROBISON RD.
TEXARKANA, TEXAS 75501

COLLINS And WILLIAMS

104 E. Broad fine apparel for men & boys
7 Oaklawn Center

"The Diamond Store"

OWENS JEWELERS

204 E. Broad St. - No. 9 K-Mart Plaza
Texarkana, Ark.-Tex. 75501

SHOE CASE

"For Fine Family
Footwear"

No. 70 Oaklawn
Village

**BRUCE CAVER
MOTOR CO.**

FRONTIER STORE

Texarkana Stockyards
Western Wear - Ranch Supplies
Texarkana

**ATHLETIC SUPPLY
COMPANY**

Brand Names You Know
2324 Texas Blvd. Ph. 793-2321

JOHNSON BAKERY

Kay's
JEWELERS

Downtown Oaklawn

Southwest
PRINTERS AND PUBLISHERS, INC.
308 EAST BROAD • TEXARKANA, ARK.-TEX. 75501

S AND S SUPPLY

"Complete Outfitters for
Your Car"
217 E. Broad Texarkana, Ark.

GRAYS MFG. JEWELERS

Fine Jewelry, Mountings, and Diamonds
Tom L. Gray Owner (501) 772-7102
302 State Line Texarkana, Ark. 75501

Pandora's
CERAMIC & ART SUPPLIES
GALLERY • GIFTS

Nancy & Ken Womack 3201 New Boston Rd.
Phone 832-1251 TEXARKANA, TEXAS

JCPenney
The values are here every day.

THE POISE SHOP

College Drive
Texarkana

LOVE ALL MUSIC CO.

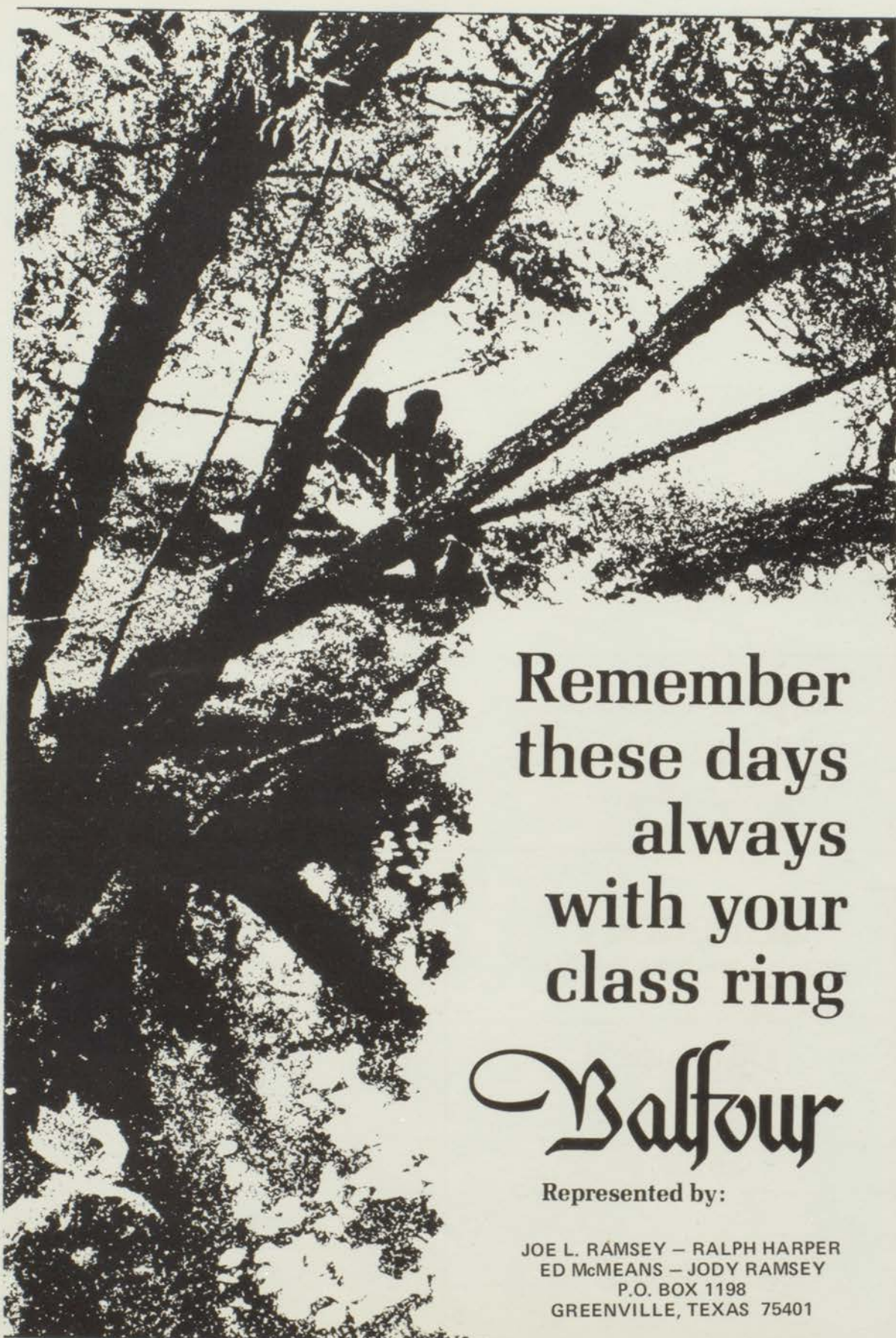
"Specializing in Bands"
3923 North State Line
Ph. 794-3735 Texarkana, Texas

BUCHANAN BOTTLING CO.

3001 State Line
Dr. Pepper - 7-Up - Pepsi Cola

Compliments of
SATTERFIELD'S
Handy-Dandy Stations

DRAPERY TOWN 
"Great American Values"
Division of Stanley
Industries Inc.
82 Oaklawn Village

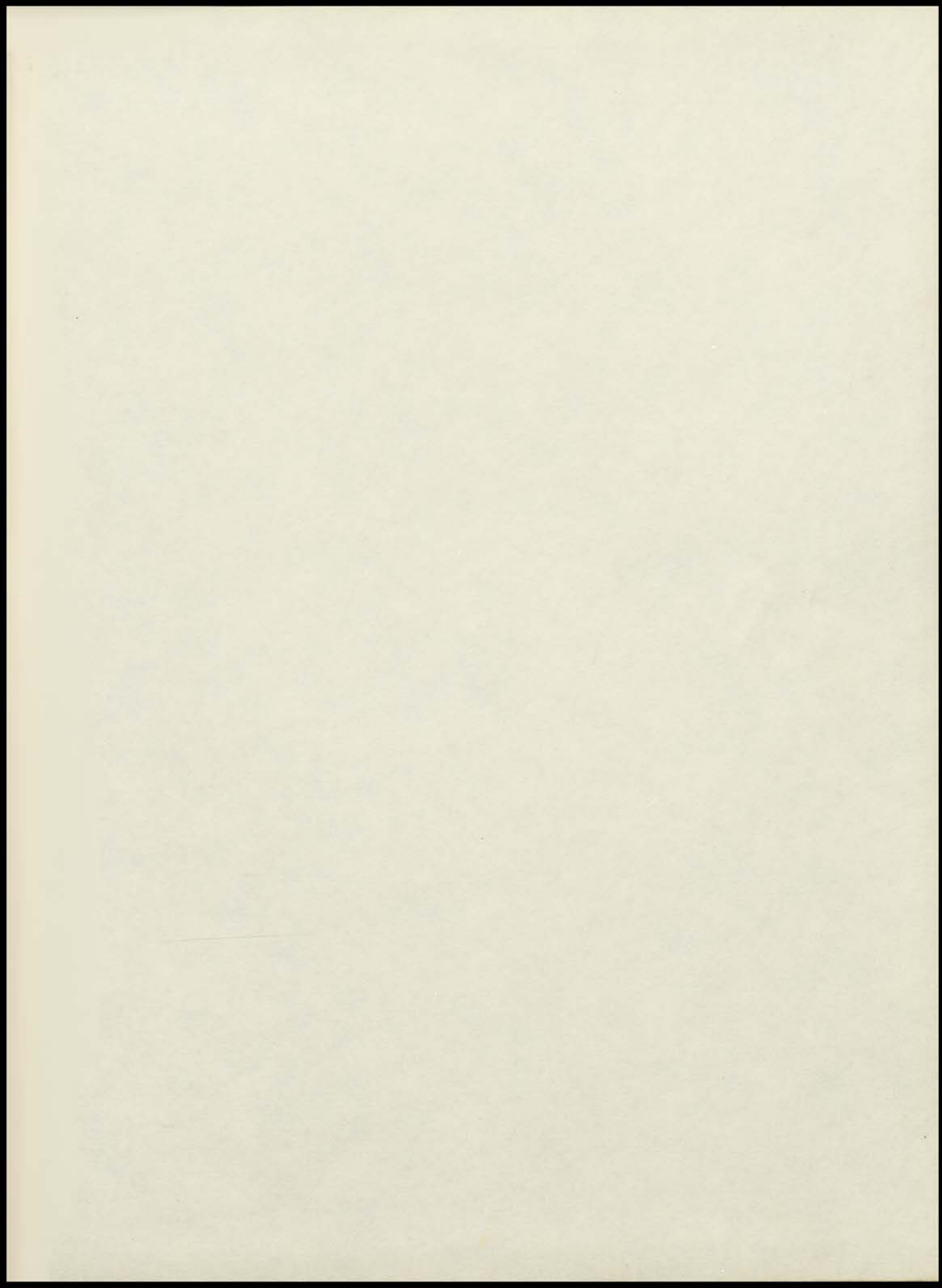


Remember
these days
always
with your
class ring

Balfour

Represented by:

JOE L. RAMSEY — RALPH HARPER
ED McMEANS — JODY RAMSEY
P.O. BOX 1198
GREENVILLE, TEXAS 75401



Remember
these days
always
with your
class ring

Olden

